

# Phospho-NRF2-S40 Rabbit mAb

Catalog No.: AP1133 **Recombinant** **14 Publications**

## Basic Information

### Observed MW

100kDa

### Calculated MW

68kDa

### Category

Primary antibody

### Applications

ELISA, WB, IHC-P

### Cross-Reactivity

Human, Mouse, Rat

### CloneNo number

ARC0283

## Background

This gene encodes a transcription factor which is a member of a small family of basic leucine zipper (bZIP) proteins. The encoded transcription factor regulates genes which contain antioxidant response elements (ARE) in their promoters; many of these genes encode proteins involved in response to injury and inflammation which includes the production of free radicals. Multiple transcript variants encoding different isoforms have been characterized for this gene.

## Recommended Dilutions

**WB** 1:500 - 1:2000

**IHC-P** 1:50 - 1:200

## Immunogen Information

### Gene ID

4780

### Swiss Prot

Q16236

### Immunogen

A synthetic phosphorylated peptide around S40 of human NRF2 (Q16236).

### Synonyms

NRF2; HEBP1; Nrf-2; IMDDHH; Phospho-NRF2-S40

## Contact

 | [www.abclonal.com](http://www.abclonal.com)

## Product Information

### Source

Rabbit

### Isotype

IgG

### Purification

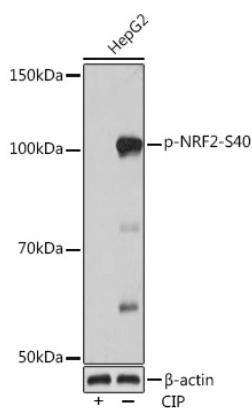
Affinity purification

### Storage

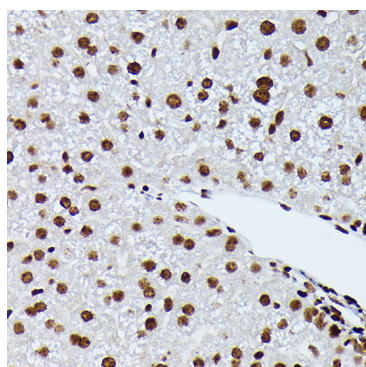
Store at -20°C. Avoid freeze / thaw cycles.

Buffer: PBS with 0.02% sodium azide, 0.05% BSA, 50% glycerol, pH7.3.

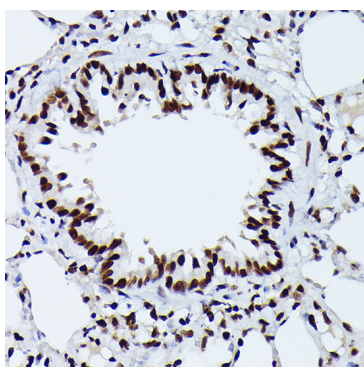
## Validation Data



Western blot analysis of various lysates using Phospho-NRF2-S40 Rabbit mAb (A4859) at 1:1000 dilution. HepG2 cells were treated by CIP (20uL/400uL) at 37°C for 1 hour. Secondary antibody: HRP Goat Anti-Rabbit IgG (H+L) (A5014) at 1:10000 dilution. Lysates/proteins: 25µg per lane. Blocking buffer: 3% BSA. Detection: ECL Basic Kit (RM00020). Exposure time: 3min.



Immunohistochemistry analysis of Phospho-NRF2-S40 in paraffin-embedded mouse liver using Phospho-NRF2-S40 Rabbit mAb (AP1133) at dilution of 1:100 (40x lens). Perform high pressure antigen retrieval with 10 mM citrate buffer pH 6.0 before commencing with IHC staining protocol.



Immunohistochemistry analysis of Phospho-NRF2-S40 in paraffin-embedded rat lung using Phospho-NRF2-S40 Rabbit mAb (AP1133) at dilution of 1:100 (40x lens). Perform high pressure antigen retrieval with 10 mM citrate buffer pH 6.0 before commencing with IHC staining protocol.