

AP1082

Leader in Biomolecular Solutions for Life Science



## Phospho-EPHA2-S897 Rabbit pAb

Catalog No.: AP1082

1 Publications

### Basic Information

#### Observed MW

125kDa

#### Calculated MW

108kDa

#### Category

Mouse Monoclonal Antibody

#### Applications

WB, ELISA

#### Cross-Reactivity

Human, Mouse, Rat

### Background

This gene belongs to the ephrin receptor subfamily of the protein-tyrosine kinase family. EPH and EPH-related receptors have been implicated in mediating developmental events, particularly in the nervous system. Receptors in the EPH subfamily typically have a single kinase domain and an extracellular region containing a Cys-rich domain and 2 fibronectin type III repeats. The ephrin receptors are divided into 2 groups based on the similarity of their extracellular domain sequences and their affinities for binding ephrin-A and ephrin-B ligands. This gene encodes a protein that binds ephrin-A ligands. Mutations in this gene are the cause of certain genetically-related cataract disorders.

### Recommended Dilutions

WB 1:500 - 1:2000

### Immunogen Information

#### Gene ID

1969

#### Swiss Prot

P29317

#### Immunogen

A synthetic phosphorylated peptide around S897 of human EPHA2 (NP\_004422.2).

#### Synonyms

ECK; CTPA; ARCC2; CTPP1; CTRCT6; Phospho-EPHA2-S897

### Contact



[www.abclonal.com](http://www.abclonal.com)

### Product Information

#### Source

Rabbit

#### Isotype

IgG

#### Purification

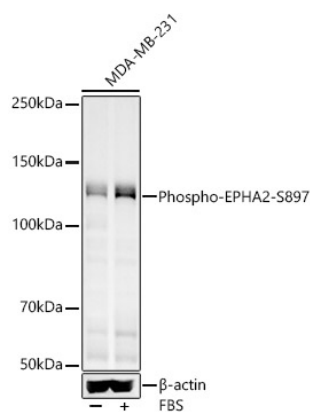
Affinity purification

#### Storage

Store at -20°C. Avoid freeze / thaw cycles.

Buffer: PBS with 0.01% thimerosal, 50% glycerol, pH 7.3.

## Validation Data



Western blot analysis of MDA-MB-231, using Phospho-EPHA2-S897 Rabbit pAb (AP1082) at 1:400 dilution. MDA-MB-231 cells were treated by 20% FBS at 37°C for 20 minutes after serum-starvation overnight.

Secondary antibody: HRP Goat Anti-Rabbit IgG (H+L) (AS014) at 1:10000 dilution.

Lysates/proteins: 25ug per lane.

Blocking buffer: 3% nonfat dry milk in TBST.

Detection: ECL Enhanced Kit (RM00021).

Exposure time: 90s.