

AP0978

Leader in Biomolecular Solutions for Life Science



Phospho-mTOR-S2481 Rabbit mAb

Catalog No.: AP0978

Recombinant

Basic Information

Observed MW

289kDa

Calculated MW

289kDa

Category

SMab Recombinant Monoclonal Antibody

Applications

WB, ELISA

Cross-Reactivity

Human, Mouse

CloneNo number

ARC1522

Background

The protein encoded by this gene belongs to a family of phosphatidylinositol kinase-related kinases. These kinases mediate cellular responses to stresses such as DNA damage and nutrient deprivation. This kinase is a component of two distinct complexes, mTORC1, which controls protein synthesis, cell growth and proliferation, and mTORC2, which is a regulator of the actin cytoskeleton, and promotes cell survival and cell cycle progression. This protein acts as the target for the cell-cycle arrest and immunosuppressive effects of the FKBP12-rapamycin complex. Inhibitors of mTOR are used in organ transplants as immunosuppressants, and are being evaluated for their therapeutic potential in SARS-CoV-2 infections. Mutations in this gene are associated with Smith-Kingsmore syndrome and somatic focal cortical dysplasia type II. The ANGPTL7 gene is located in an intron of this gene.

Recommended Dilutions

WB 1:500 - 1:2000

Immunogen Information

Gene ID

2475

Swiss Prot

P42345

Immunogen

A synthetic phosphorylated peptide around S2481 of human mTOR (P42345).

Synonyms

SKS; FRAP; FRAP1; FRAP2; RAFT1; RAPT1; Phospho-mTOR-S2481

Contact



www.abclonal.com

Product Information

Source

Rabbit

Isotype

IgG

Purification

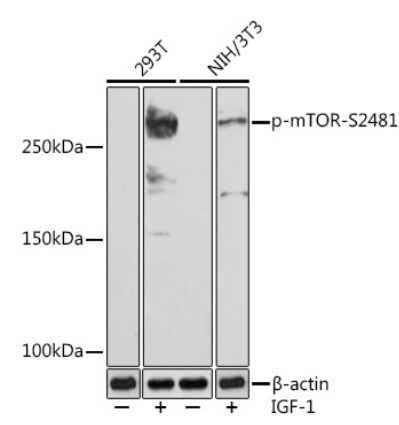
Affinity purification

Storage

Store at -20°C. Avoid freeze / thaw cycles.

Buffer: PBS with 0.02% sodium azide, 0.05% BSA, 50% glycerol, pH 7.3.

Validation Data



Western blot analysis of extracts of various cell lines, using Phospho-mTOR-S2481 (AP0978) at 1:1000 dilution. Both 293T cells and NIH/3T3 cells were treated by IGF-1 (50 ng/mL) at 37°C for 5 minutes after serum-starvation overnight.
Secondary antibody: HRP Goat Anti-Rabbit IgG (H+L) (AS014) at 1:10000 dilution.
Lysates/proteins: 25µg per lane.
Blocking buffer: 3% BSA.
Detection: ECL Basic Kit (RM00020).
Exposure time: 3min.