

AP0938

Leader in Biomolecular Solutions for Life Science



Phospho-SMO-S616 Rabbit pAb

Catalog No.: AP0938

Basic Information

Observed MW

Refer to figures

Calculated MW

86kDa

Category

Polyclonal Antibody

Applications

WB, ELISA, DB

Cross-Reactivity

Human

Background

The protein encoded by this gene is a G protein-coupled receptor that interacts with the patched protein, a receptor for hedgehog proteins. The encoded protein transduces signals to other proteins after activation by a hedgehog protein/patched protein complex.

Recommended Dilutions

DB	1:500 - 1:1000
WB	1:500 - 1:1000

Immunogen Information

Gene ID

6608

Swiss Prot

Q99835

Immunogen

A synthetic phosphorylated peptide around S616 of human SMO (NP_005622.1).

Synonyms

Gx; CRJS; PHLS; SMOH; FZD11; Phospho-SMO-S616

Contact



www.abclonal.com

Product Information

Source

Rabbit

Isotype

IgG

Purification

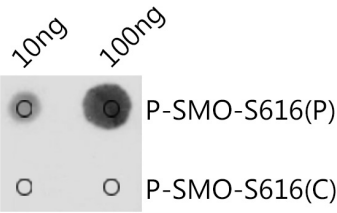
Affinity purification

Storage

Store at -20°C. Avoid freeze / thaw cycles.

Buffer: PBS with 0.01% thimerosal, 50% glycerol, pH 7.3.

Validation Data



Dot-blot analysis of all sorts of peptides
using Phospho-SMO-S616 antibody
(AP0938) at 1:1000 dilution.
Exposure time: 1s.