

AP0910

Leader in Biomolecular Solutions for Life Science



## Phospho-PLN-T17 Rabbit pAb

Catalog No.: AP0910

5 Publications

### Basic Information

#### Observed MW

24kDa

#### Calculated MW

6kDa

#### Category

Polyclonal Antibody

#### Applications

WB, IHC-P, ELISA

#### Cross-Reactivity

Human, Mouse, Rat

### Background

The protein encoded by this gene is found as a pentamer and is a major substrate for the cAMP-dependent protein kinase in cardiac muscle. The encoded protein is an inhibitor of cardiac muscle sarcoplasmic reticulum Ca(2+)-ATPase in the unphosphorylated state, but inhibition is relieved upon phosphorylation of the protein. The subsequent activation of the Ca(2+) pump leads to enhanced muscle relaxation rates, thereby contributing to the inotropic response elicited in heart by beta-agonists. The encoded protein is a key regulator of cardiac diastolic function. Mutations in this gene are a cause of inherited human dilated cardiomyopathy with refractory congestive heart failure, and also familial hypertrophic cardiomyopathy.

### Recommended Dilutions

WB	1:100 - 1:500
IHC-P	1:50 - 1:200

### Immunogen Information

#### Gene ID

5350

#### Swiss Prot

P26678

#### Immunogen

A synthetic phosphorylated peptide around T17 of human PLN (NP\_002658.1).

#### Synonyms

PLB; CMD1P; CMH18; Phospho-PLN-T17

### Contact



[www.abclonal.com](http://www.abclonal.com)

### Product Information

#### Source

Rabbit

#### Isotype

IgG

#### Purification

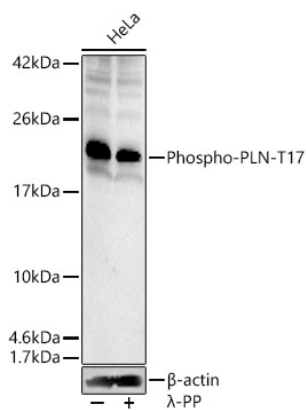
Affinity purification

#### Storage

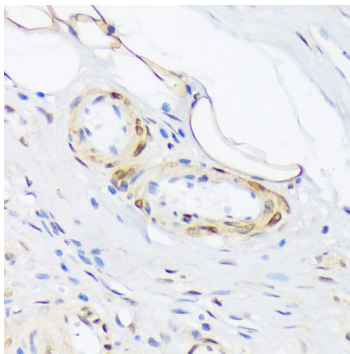
Store at -20°C. Avoid freeze / thaw cycles.

Buffer: PBS with 0.01% thimerosal, 50% glycerol, pH 7.3.

## Validation Data



Western blot analysis of HeLa, using Phospho-PLN-T17 Rabbit pAb (AP0910) at 1:400 dilution. HeLa cells were treated by  $\lambda$ -PP mixed solution (1ul) at 30°C for 30 minutes.  
Secondary antibody: HRP Goat Anti-Rabbit IgG (H+L) (AS014) at 1:10000 dilution.  
Lysates/proteins: 25 $\mu$ g per lane.  
Blocking buffer: 3% nonfat dry milk in TBST.  
Detection: ECL Enhanced Kit (RM00021).  
Exposure time: 90s.



Immunohistochemistry analysis of paraffin-embedded human appendix using Phospho-phospholamban-T17 antibody (AP0910) at dilution of 1:100 (40x lens). Perform microwave antigen retrieval with 10 mM Tris/EDTA buffer pH 9.0 before commencing with IHC staining protocol.