

# Phospho-AMPK $\alpha$ 1-S485 Rabbit pAb

Catalog No.: AP0871 **4 Publications**

## Basic Information

**Observed MW**

62kDa

**Calculated MW**

64kDa

**Category**

Primary antibody

**Applications**

ELISA, WB

**Cross-Reactivity**

Human, Mouse, Rat

## Background

The protein encoded by this gene belongs to the ser/thr protein kinase family. It is the catalytic subunit of the 5'-prime-AMP-activated protein kinase (AMPK). AMPK is a cellular energy sensor conserved in all eukaryotic cells. The kinase activity of AMPK is activated by the stimuli that increase the cellular AMP/ATP ratio. AMPK regulates the activities of a number of key metabolic enzymes through phosphorylation. It protects cells from stresses that cause ATP depletion by switching off ATP-consuming biosynthetic pathways. Alternatively spliced transcript variants encoding distinct isoforms have been observed.

## Recommended Dilutions

**WB** 1:500 - 1:2000

## Immunogen Information

**Gene ID**

5562

**Swiss Prot**

Q13131

**Immunogen**

A synthetic phosphorylated peptide around S485 of human PRKAA1 (NP\_006242.5).

**Synonyms**AMPK; AMPK $\alpha$ 1; AMPK alpha 1; Phospho-AMPK $\alpha$ 1-S485

## Contact

 | [www.abclonal.com](http://www.abclonal.com)

## Product Information

**Source**

Rabbit

**Isotype**

IgG

**Purification**

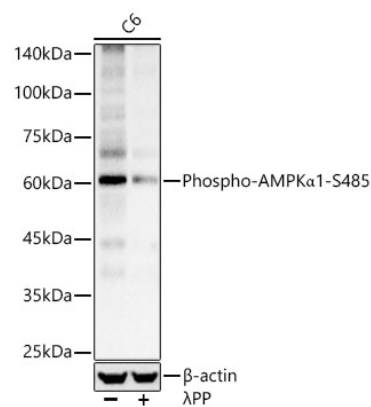
Affinity purification

**Storage**

Store at -20°C. Avoid freeze / thaw cycles.

Buffer: PBS with 0.01% thimerosal, 50% glycerol, pH7.3.

# Validation Data



Western blot analysis of lysates from C6 cells using Phospho-AMPKα1-S485 Rabbit pAb (AP0871) at 1:2000 dilution. C6 cells were treated by λpp(20uL/400ul) at 37°C for 1 hour. Secondary antibody:HRP Goat Anti-Rabbit IgG (H+L)(A5014) at 1:10000 dilution. Lysates/proteins: 25 µg per lane. Blocking buffer: 3% nonfat dry milk in TBST. Detection:ECL Basic Kit (RM00020). Exposure time: 3s.