

AP0853

Leader in Biomolecular Solutions for Life Science



## Phospho-HSL-S660 Rabbit pAb

Catalog No.: AP0853

4 Publications

### Basic Information

#### Observed MW

81kDa

#### Calculated MW

117kDa

#### Category

Polyclonal Antibody

#### Applications

WB, ELISA

#### Cross-Reactivity

Human, Mouse

### Background

The protein encoded by this gene has a long and a short form, generated by use of alternative translational start codons. The long form is expressed in steroidogenic tissues such as testis, where it converts cholesteryl esters to free cholesterol for steroid hormone production. The short form is expressed in adipose tissue, among others, where it hydrolyzes stored triglycerides to free fatty acids.

### Recommended Dilutions

WB 1:500 - 1:1000

### Immunogen Information

#### Gene ID

3991

#### Swiss Prot

Q05469

#### Immunogen

A synthetic phosphorylated peptide around S660 of human LIPE (NP\_005348.2).

#### Synonyms

HSL; LHS; REH; AOMS4; FPLD6; Phospho-HSL-S660

### Contact



[www.abclonal.com](http://www.abclonal.com)

### Product Information

#### Source

Rabbit

#### Isotype

IgG

#### Purification

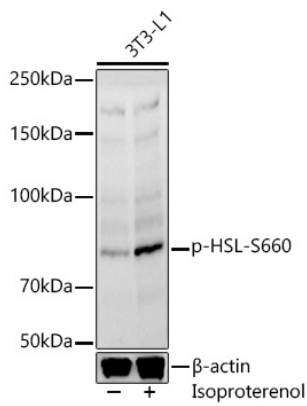
Affinity purification

#### Storage

Store at -20°C. Avoid freeze / thaw cycles.

Buffer: PBS with 0.05% proclin300, 50% glycerol, pH7.3.

## Validation Data



Western blot analysis of lysates from 3T3-L1 cells, using Phospho-HSL-S660 Rabbit pAb (AP0853) at 1:600 dilution. 3T3-L1 cells were treated with Isoproterenol (10  $\mu$ M for 20 min) at 37°C.  
Secondary antibody: HRP Goat Anti-Rabbit IgG (H+L) (AS014) at 1:10000 dilution.  
Lysates/proteins: 25 $\mu$ g per lane.  
Blocking buffer: 3% nonfat dry milk in TBST.  
Detection: ECL Basic Kit (RM00020).  
Exposure time: 30s.