

AP0727

Leader in Biomolecular Solutions for Life Science



Phospho-Smad3-S423/S425 Rabbit mAb

Catalog No.: AP0727

Recombinant

32 Publications

Basic Information

Observed MW

55kDa

Calculated MW

48kDa

Category

SMab Recombinant Monoclonal Antibody

Applications

WB, IHC-P, ELISA

Cross-Reactivity

Human, Mouse, Rat

CloneNo number

ARC0170

Background

The SMAD family of proteins are a group of intracellular signal transducer proteins similar to the gene products of the Drosophila gene 'mothers against decapentaplegic' (Mad) and the C. elegans gene Sma. The SMAD3 protein functions in the transforming growth factor-beta signaling pathway, and transmits signals from the cell surface to the nucleus, regulating gene activity and cell proliferation. This protein forms a complex with other SMAD proteins and binds DNA, functioning both as a transcription factor and tumor suppressor. Mutations in this gene are associated with aneurysms-osteoarthritis syndrome and Loeys-Dietz Syndrome 3.

Recommended Dilutions

WB	1:500 - 1:2000
IHC-P	1:50 - 1:200

Immunogen Information

Gene ID

4088

Swiss Prot

P84022

Immunogen

A synthetic phosphorylated peptide around S423 & S425 of human Smad3 (P84022).

Synonyms

LDS3; mad3; LDS1C; MADH3; JV15-2; hMAD-3; hSMAD3; HSPC193; HsT17436; Phospho-Smad3-S423/S425

Contact



www.abclonal.com

Product Information

Source

Rabbit

Isotype

IgG

Purification

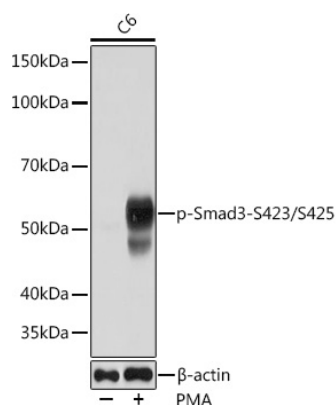
Affinity purification

Storage

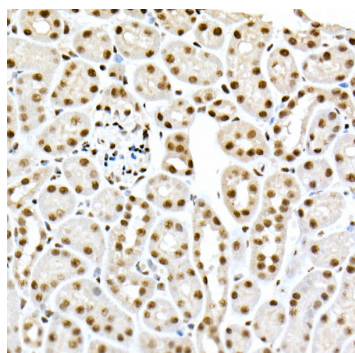
Store at -20°C. Avoid freeze / thaw cycles.

Buffer: PBS with 0.02% sodium azide, 0.05% BSA, 50% glycerol, pH7.3.

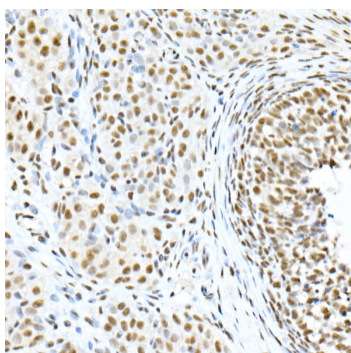
Validation Data



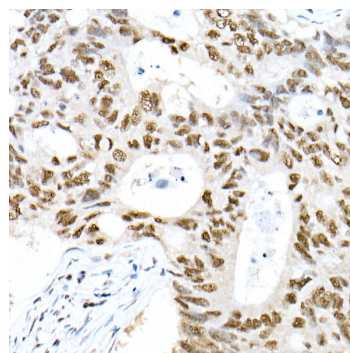
Western blot analysis of lysates from C6 cells, using Phospho-Smad3-S423/S425 Rabbit mAb (AP0727) at 1:1000 dilution. C6 cells were treated by PMA/TPA (200 nM) at 37°C for 10 minutes. Secondary antibody: HRP Goat Anti-Rabbit IgG (H+L) (AS014) at 1:10000 dilution. Lysates/proteins: 25µg per lane. Blocking buffer: 3% nonfat dry milk in TBST. Detection: ECL Basic Kit (RM00020). Exposure time: 60s.



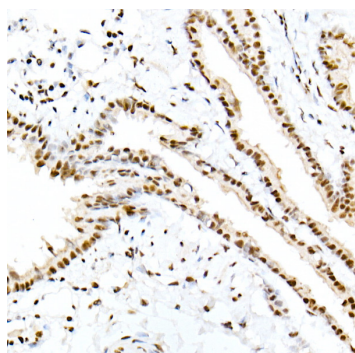
Immunohistochemistry analysis of Phospho-Smad3-S423/S425 in paraffin-embedded mouse kidney using Phospho-Smad3-S423/S425 Rabbit mAb (AP0727) at dilution of 1:200 (40x lens). Perform high pressure antigen retrieval with 10 mM citrate buffer pH 6.0 before commencing with IHC staining protocol.



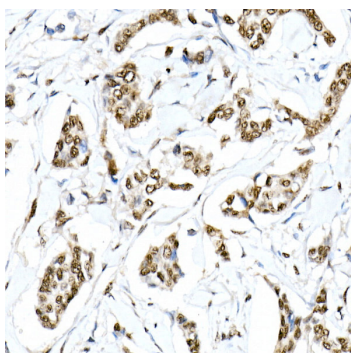
Immunohistochemistry analysis of Phospho-Smad3-S423/S425 in paraffin-embedded rat ovary using Phospho-Smad3-S423/S425 Rabbit mAb (AP0727) at dilution of 1:200 (40x lens). Perform high pressure antigen retrieval with 10 mM citrate buffer pH 6.0 before commencing with IHC staining protocol.



Immunohistochemistry analysis of Phospho-Smad3-S423/S425 in paraffin-embedded human colon carcinoma using Phospho-Smad3-S423/S425 Rabbit mAb (AP0727) at dilution of 1:200 (40x lens). Perform high pressure antigen retrieval with 10 mM citrate buffer pH 6.0 before commencing with IHC staining protocol.



Immunohistochemistry analysis of Phospho-Smad3-S423/S425 in paraffin-embedded rat lung using Phospho-Smad3-S423/S425 Rabbit mAb (AP0727) at dilution of 1:200 (40x lens). Perform high pressure antigen retrieval with 10 mM citrate buffer pH 6.0 before commencing with IHC staining protocol.



Immunohistochemistry analysis of Phospho-Smad3-S423/S425 in paraffin-embedded human breast cancer using Phospho-Smad3-S423/S425 Rabbit mAb (AP0727) at dilution of 1:200 (40x lens). Perform high pressure antigen retrieval with 10 mM citrate buffer pH 6.0 before commencing with IHC staining protocol.