

AP0621

Leader in Biomolecular Solutions for Life Science



## Phospho-DNA-PKcs-S2056 Rabbit pAb

Catalog No.: AP0621

2 Publications

### Basic Information

#### Observed MW

469kDa

#### Calculated MW

469kDa

#### Category

Mouse Monoclonal Antibody

#### Applications

WB, IHC-P, IF/ICC, ELISA

#### Cross-Reactivity

Human

### Background

This gene encodes the catalytic subunit of the DNA-dependent protein kinase (DNA-PK). It functions with the Ku70/Ku80 heterodimer protein in DNA double strand break repair and recombination. The protein encoded is a member of the PI3/PI4-kinase family.

### Recommended Dilutions

WB	1:500 - 1:2000
IHC-P	1:100 - 1:500
IF/ICC	1:50 - 1:200

### Immunogen Information

#### Gene ID

5591

#### Swiss Prot

P78527

#### Immunogen

A synthetic phosphorylated peptide around S2056 of human DNA-PKcs (NP\_008835.5).

#### Synonyms

HYRC; p350; DNAPK; DNPK1; HYRC1; IMD26; XRCC7; DNAPKc; DNA-PKC; DNA-PKcs; Phospho-DNA-PKcs-S2056

### Contact



[www.abclonal.com](http://www.abclonal.com)

### Product Information

#### Source

Rabbit

#### Isotype

IgG

#### Purification

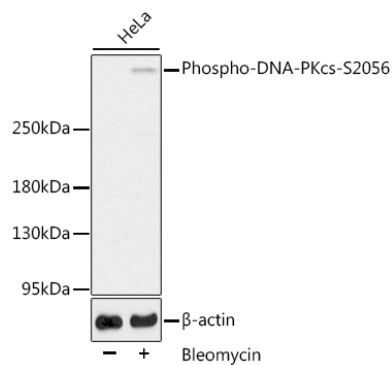
Affinity purification

#### Storage

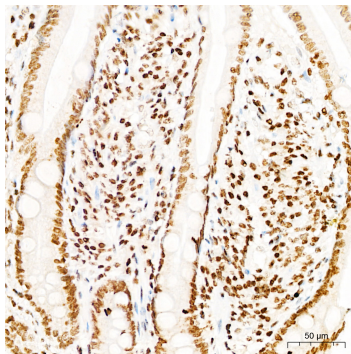
Store at -20°C. Avoid freeze / thaw cycles.

Buffer: PBS with 0.01% thimerosal, 50% glycerol, pH7.3.

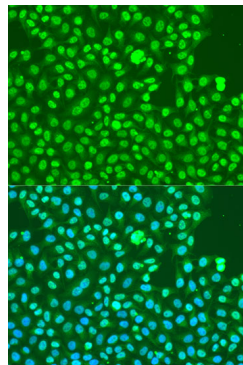
## Validation Data



Western blot analysis of lysates from HeLa cells, using Phospho-DNA-PKcs-S2056 Rabbit pAb (AP0621).  
Secondary antibody: HRP Goat Anti-Rabbit IgG (H+L) (AS014) at 1:10000 dilution.  
Lysates/proteins: 25µg per lane.  
Blocking buffer: 3% BSA.



Immunohistochemistry analysis of Phospho-DNA-PKcs-S2056 in paraffin-embedded Human small intestine tissue using Phospho-DNA-PKcs-S2056 Rabbit pAb (AP0621) at a dilution of 1:300 (40x lens). High pressure antigen retrieval was performed with 0.01 M citrate buffer (pH 6.0) prior to IHC staining.



Immunofluorescence analysis of U2OS cells using Phospho-DNA-PKcs-S2056 Rabbit pAb (AP0621) at dilution of 1:100. Secondary antibody: Cy3 Goat Anti-Rabbit IgG (H+L) (AS007) at 1:500 dilution. Blue: DAPI for nuclear staining.