

AP0593

Leader in Biomolecular Solutions for Life Science



Phospho-CDK4-T172 Rabbit pAb

Catalog No.: AP0593

10 Publications

Basic Information

Observed MW

33kDa

Calculated MW

34kDa

Category

Polyclonal Antibody

Applications

WB, IF/ICC, ELISA

Cross-Reactivity

Human, Mouse, Rat

Background

The protein encoded by this gene is a member of the Ser/Thr protein kinase family. This protein is highly similar to the gene products of *S. cerevisiae* cdc28 and *S. pombe* cdc2. It is a catalytic subunit of the protein kinase complex that is important for cell cycle G1 phase progression. The activity of this kinase is restricted to the G1-S phase, which is controlled by the regulatory subunits D-type cyclins and CDK inhibitor p16(INK4a). This kinase was shown to be responsible for the phosphorylation of retinoblastoma gene product (Rb). Mutations in this gene as well as in its related proteins including D-type cyclins, p16(INK4a) and Rb were all found to be associated with tumorigenesis of a variety of cancers. Multiple polyadenylation sites of this gene have been reported.

Recommended Dilutions

WB 1:500 - 1:2000

Immunogen Information

Gene ID

1019

Swiss Prot

P11802

Immunogen

A synthetic phosphorylated peptide around T172 of human CDK4 (NP_000066.1).

Synonyms

CMM3; PSK-J3; Phospho-CDK4-T172

Contact



www.abclonal.com

Product Information

Source

Rabbit

Isotype

IgG

Purification

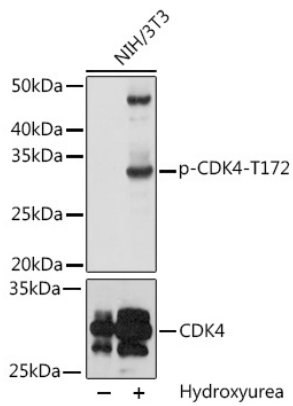
Affinity purification

Storage

Store at -20°C. Avoid freeze / thaw cycles.

Buffer: PBS with 0.02% sodium azide, 50% glycerol, pH 7.3.

Validation Data



Western blot analysis of lysates from NIH/3T3 cells, using Phospho-CDK4-T172 Rabbit pAb (A0366). NIH/3T3 cells were treated by Hydroxyurea (4 mM) at 37°C for 20 hours. Secondary antibody: HRP Goat Anti-Rabbit IgG (H+L) (AS014) at 1:10000 dilution. Lysates/proteins: 25µg per lane. Blocking buffer: 3% BSA. Detection: ECL Basic Kit (RM00020). Exposure time: 60s.