

AP0578

Leader in Biomolecular Solutions for Life Science



## Phospho-Chk1-S345 Rabbit pAb

Catalog No.: AP0578

6 Publications

### Basic Information

#### Observed MW

56kDa

#### Calculated MW

54kDa

#### Category

Mouse Monoclonal Antibody

#### Applications

WB, ELISA

#### Cross-Reactivity

Human, Mouse, Rat

### Background

The protein encoded by this gene belongs to the Ser/Thr protein kinase family. It is required for checkpoint mediated cell cycle arrest in response to DNA damage or the presence of unreplicated DNA. This protein acts to integrate signals from ATM and ATR, two cell cycle proteins involved in DNA damage responses, that also associate with chromatin in meiotic prophase I. Phosphorylation of CDC25A protein phosphatase by this protein is required for cells to delay cell cycle progression in response to double-strand DNA breaks. Several alternatively spliced transcript variants have been found for this gene.

### Recommended Dilutions

WB 1:100 - 1:500

### Immunogen Information

#### Gene ID

1111

#### Swiss Prot

O14757

#### Immunogen

A synthetic phosphorylated peptide around S345 of human Chk1 (NP\_001265.2).

#### Synonyms

CHK1; Phospho-Chk1-S345

### Contact



[www.abclonal.com](http://www.abclonal.com)

### Product Information

#### Source

Rabbit

#### Isotype

IgG

#### Purification

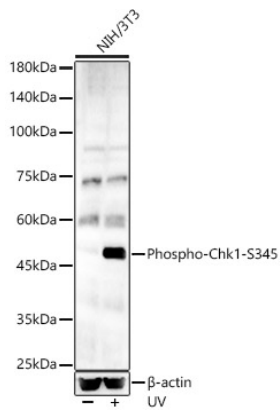
Affinity purification

#### Storage

Store at -20°C. Avoid freeze / thaw cycles.

Buffer: PBS with 0.01% thimerosal, 50% glycerol, pH7.3.

## Validation Data



Western blot analysis of NIH/3T3, using Phospho-Chk1-S345 Rabbit pAb (AP0578) at 1:500 dilution. NIH/3T3 cells were treated by UV at room temperature for 15-30 minutes. Secondary antibody: HRP Goat Anti-Rabbit IgG (H+L) (AS014) at 1:10000 dilution. Lysates/proteins: 25µg per lane. Blocking buffer: 3% nonfat dry milk in TBST. Detection: ECL Basic Kit (RM00020). Exposure time: 180s.