

AP0534

Leader in Biomolecular Solutions for Life Science



Phospho-PKC mu-S744/748 Rabbit pAb

Catalog No.: AP0534

Basic Information

Observed MW

102kDa

Calculated MW

102kDa

Category

Polyclonal Antibody

Applications

WB, ELISA

Cross-Reactivity

Human, Mouse, Rat

Background

The protein encoded by this gene is a serine/threonine protein kinase involved in many cellular processes, including Golgi body membrane integrity and transport, cell migration and differentiation, MAPK8/JNK1 and Ras pathway signaling, MAPK1/3 (ERK1/2) pathway signaling, cell survival, and regulation of cell shape and adhesion.

Recommended Dilutions

WB 1:500 - 1:2000

Immunogen Information

Gene ID

5587

Swiss Prot

Q15139

Immunogen

A synthetic phosphorylated peptide around S744 & S748 of mouse PKC mu (NP_032884.2).

Synonyms

PKD; PKCM; CHDED; PRKCM; PKC-MU; Phospho-PKC mu-S744/748

Contact



www.abclonal.com

Product Information

Source

Rabbit

Isotype

IgG

Purification

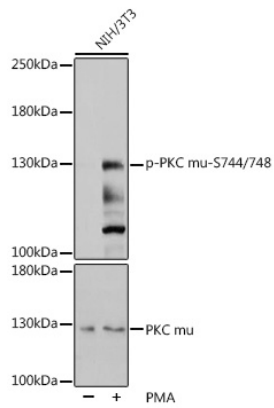
Affinity purification

Storage

Store at -20°C. Avoid freeze / thaw cycles.

Buffer: PBS with 0.02% sodium azide, 50% glycerol, pH 7.3.

Validation Data



Western blot analysis of extracts of NIH/3T3 cells, using Phospho-PKC mu-S744/748 pAb (AP0534) at 1:1000 dilution or PRKD1 antibody (A16185). NIH/3T3 cells were treated by PMA/TPA (200nM) for 30 minutes after serum-starvation overnight.

Secondary antibody: HRP Goat Anti-Rabbit IgG (H+L) (AS014) at 1:10000 dilution.

Lysates/proteins: 25µg per lane.

Blocking buffer: 3% BSA.

Detection: ECL Basic Kit (RM00020).

Exposure time: 5s.