

AP0496

Leader in Biomolecular Solutions for Life Science



Phospho-PKC delta-Y311 Rabbit pAb

Catalog No.: AP0496

Basic Information

Observed MW

78kDa

Calculated MW

78kDa

Category

Polyclonal Antibody

Applications

WB, ELISA

Cross-Reactivity

Human, Mouse

Background

The protein encoded by this gene is a member of the protein kinase C family of serine- and threonine-specific protein kinases. The encoded protein is activated by diacylglycerol and is both a tumor suppressor and a positive regulator of cell cycle progression. Also, this protein can positively or negatively regulate apoptosis. Defects in this gene are a cause of autoimmune lymphoproliferative syndrome.

Recommended Dilutions

WB 1:500 - 1:2000

Immunogen Information

Gene ID

5580

Swiss Prot

Q05655

Immunogen

A synthetic phosphorylated peptide around Y311 of rat PKC delta (NP_579841.1).

Synonyms

MAY1; PKCD; ALPS3; CVID9; nPKC-delta; Phospho-PKC delta-Y311

Contact



www.abclonal.com

Product Information

Source

Rabbit

Isotype

IgG

Purification

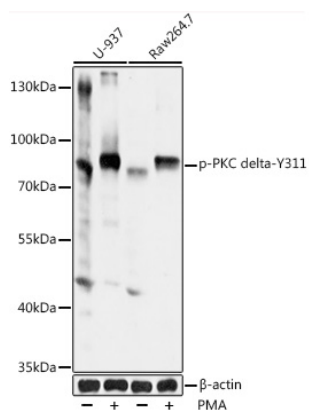
Affinity purification

Storage

Store at -20°C. Avoid freeze / thaw cycles.

Buffer: PBS with 0.02% sodium azide, 50% glycerol, pH 7.3.

Validation Data



Western blot analysis of extracts of U937 and Raw264.7 cells, using Phospho-PKC delta-Y311 antibody (AP0496) at 1:1000 dilution. U-937 cells were treated by PMA/TPA (200nM) for 30 minutes. RAW 264.7 cells were treated by PMA (200 nM) for 30 minutes .
Secondary antibody: HRP Goat Anti-Rabbit IgG (H+L) (AS014) at 1:10000 dilution.
Lysates/proteins: 25µg per lane.
Blocking buffer: 3% BSA.
Detection: ECL Basic Kit (RM00020).
Exposure time: 60s.