

AP0452

Leader in Biomolecular Solutions for Life Science



## Phospho-SRC Family-Y416 Rabbit pAb

Catalog No.: AP0452

7 Publications

### Basic Information

#### Observed MW

60kDa

#### Calculated MW

60kDa

#### Category

Polyclonal Antibody

#### Applications

WB, ELISA

#### Cross-Reactivity

Human, Mouse, Rat

### Background

This gene is highly similar to the v-src gene of Rous sarcoma virus. This proto-oncogene may play a role in the regulation of embryonic development and cell growth. The protein encoded by this gene is a tyrosine-protein kinase whose activity can be inhibited by phosphorylation by c-SRC kinase. Mutations in this gene could be involved in the malignant progression of colon cancer. Two transcript variants encoding the same protein have been found for this gene.

### Recommended Dilutions

WB 1:500 - 1:1000

### Immunogen Information

#### Gene ID

2534/3055/3932/4067/6714/7525

#### Swiss Prot

P12931

#### Immunogen

A synthetic phosphorylated peptide around Y416 of human SRC Family (NP\_005408.1).

#### Synonyms

ASV; SRC1; THC6; c-SRC; p60-Src; SRC; Phospho-SRC Family-Y416

### Contact



[www.abclonal.com](http://www.abclonal.com)

### Product Information

#### Source

Rabbit

#### Isotype

IgG

#### Purification

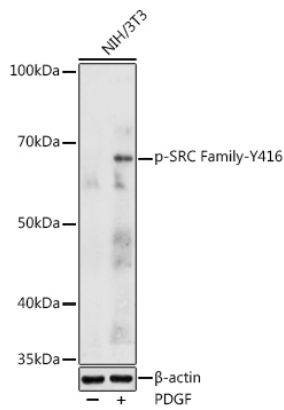
Affinity purification

#### Storage

Store at -20°C. Avoid freeze / thaw cycles.

Buffer: PBS with 0.01% thimerosal, 50% glycerol, pH 7.3.

## Validation Data



Western blot analysis of lysates from NIH/3T3 cells, using Phospho-SRC Family-Y416 Rabbit pAb (AP0452) at 1:1000 dilution. NIH/3T3 cells were treated by PDGF (100 ng/ml) at 37°C for 30 minutes after serum-starvation overnight.

Secondary antibody: HRP Goat Anti-Rabbit IgG (H+L) (AS014) at 1:10000 dilution.

Lysates/proteins: 25µg per lane.

Blocking buffer: 3% nonfat dry milk in TBST.

Detection: ECL Enhanced Kit (RM00021).

Exposure time: 180s.