

AP0426

Leader in Biomolecular Solutions for Life Science



Phospho-PDK1/PDPK1-S241 Rabbit pAb

Catalog No.: AP0426

3 Publications

Basic Information

Observed MW

58-68kDa

Calculated MW

63kDa

Category

Polyclonal Antibody

Applications

WB, IF/ICC, ELISA

Cross-Reactivity

Human, Mouse, Rat

Background

Enables 3-phosphoinositide-dependent protein kinase activity; phospholipase activator activity; and phospholipase binding activity. Involved in several processes, including cell surface receptor signaling pathway; regulation of protein kinase activity; and regulation of signal transduction. Acts upstream of or within intracellular signal transduction. Located in cell projection; cytosol; and plasma membrane. Implicated in prostate cancer. Biomarker of lung non-small cell carcinoma.

Recommended Dilutions

WB	1:500 - 1:2000
IF/ICC	1:100 - 1:200

Immunogen Information

Gene ID

5170

Swiss Prot

O15530

Immunogen

A phospho specific peptide corresponding to residues surrounding S241 of human PDK1/PDPK1

Synonyms

PDK1; PDPK2; PDPK2P; PRO0461; Phospho-PDK1/PDPK1-S241

Contact



www.abclonal.com

Product Information

Source

Rabbit

Isotype

IgG

Purification

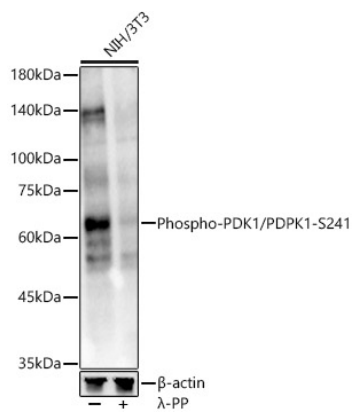
Affinity purification

Storage

Store at -20°C. Avoid freeze / thaw cycles.

Buffer: PBS with 0.02% sodium azide, 50% glycerol, pH7.3.

Validation Data



Western blot analysis of NIH/3T3, using Phospho-PDK1/PDPK1-S241 Rabbit pAb (AP0426) at 1:1000 dilution. NIH/3T3 cells were treated by λ-PP mixed solution (1ul) at 30°C for 30 minutes.
Secondary antibody: HRP Goat Anti-Rabbit IgG (H+L) (AS014) at 1:10000 dilution.
Lysates/proteins: 25ug per lane.
Blocking buffer: 3% nonfat dry milk in TBST.
Detection: ECL Enhanced Kit (RM00021).
Exposure time: 30s.