

AP0401

Leader in Biomolecular Solutions for Life Science



Phospho-Tau-T231 Rabbit pAb

Catalog No.: AP0401

2 Publications

Basic Information

Observed MW

50-70kDa

Calculated MW

79kDa

Category

Polyclonal Antibody

Applications

WB, ELISA

Cross-Reactivity

Mouse, Rat

Background

This gene encodes the microtubule-associated protein tau (MAPT) whose transcript undergoes complex, regulated alternative splicing, giving rise to several mRNA species. MAPT transcripts are differentially expressed in the nervous system, depending on stage of neuronal maturation and neuron type. MAPT gene mutations have been associated with several neurodegenerative disorders such as Alzheimer's disease, Pick's disease, frontotemporal dementia, cortico-basal degeneration and progressive supranuclear palsy.

Recommended Dilutions

WB 1:1000 - 1:5000

Immunogen Information

Gene ID

4137

Swiss Prot

P10636

Immunogen

A synthetic phosphorylated peptide around T231 of human Tau.

Synonyms

TAU; MSTD; PPND; DDPAC; MAPTL; MTBT1; MTBT2; tau-40; FTDP-17; PPP1R103; Tau-PHF6; Phospho-Tau-T231

Contact



www.abclonal.com

Product Information

Source

Rabbit

Isotype

IgG

Purification

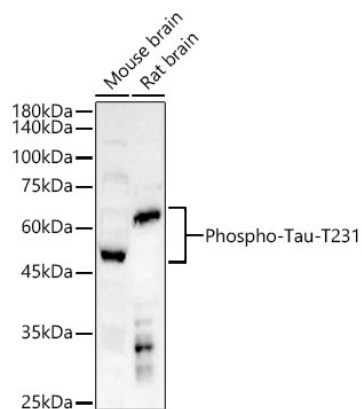
Affinity purification

Storage

Store at -20°C. Avoid freeze / thaw cycles.

Buffer: PBS with 0.05% proclin300, 50% glycerol, pH7.3.

Validation Data



Western blot analysis of various lysates using Phospho-Tau-T231 Rabbit pAb (AP0401) at 1:2000 dilution.
Secondary antibody: HRP Goat Anti-Rabbit IgG (H+L) (AS014) at 1:10000 dilution.
Lysates / proteins: 25 µg per lane.
Blocking buffer: 3 % nonfat dry milk in TBST.
Detection: ECL Basic Kit (RM00020).
Exposure time: 60s.