

AP0325

Leader in Biomolecular Solutions for Life Science



Phospho-CDK2-T160 Rabbit pAb

Catalog No.: AP0325

2 Publications

Basic Information

Observed MW

32kDa/34kDa

Calculated MW

34kDa

Category

Polyclonal Antibody

Applications

WB, IHC-P, ELISA

Cross-Reactivity

Human, Mouse, Rat

Background

This gene encodes a member of a family of serine/threonine protein kinases that participate in cell cycle regulation. The encoded protein is the catalytic subunit of the cyclin-dependent protein kinase complex, which regulates progression through the cell cycle. Activity of this protein is especially critical during the G1 to S phase transition. This protein associates with and regulated by other subunits of the complex including cyclin A or E, CDK inhibitor p21Cip1 (CDKN1A), and p27Kip1 (CDKN1B). Alternative splicing results in multiple transcript variants.

Recommended Dilutions

WB	1:100 - 1:500
IHC-P	1:50 - 1:100

Immunogen Information

Gene ID

1017

Swiss Prot

P24941

Immunogen

A synthetic phosphorylated peptide around T160 of human CDK2 (NP_001789.2?/NP_001249.1).

Synonyms

CDKN2; p33(CDK2); Phospho-CDK2-T160

Contact



www.abclonal.com

Product Information

Source

Rabbit

Isotype

IgG

Purification

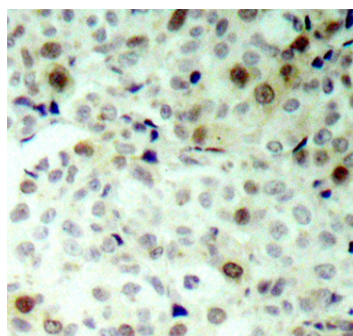
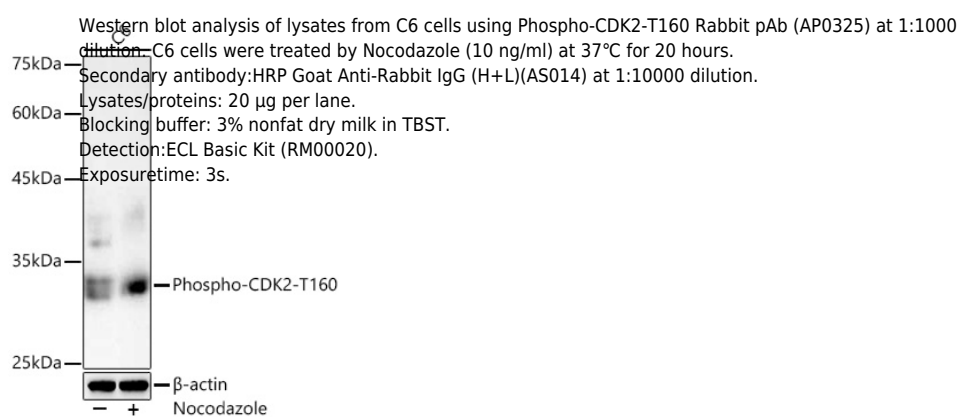
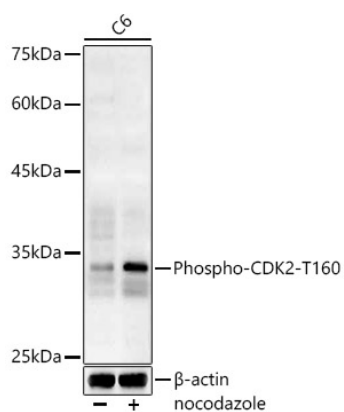
Affinity purification

Storage

Store at -20°C. Avoid freeze / thaw cycles.

Buffer: PBS with 0.05% proclin300, 50% glycerol, pH7.3.

Validation Data



Immunohistochemistry analysis of Phospho-CDK2-T160 in paraffin-embedded human breast carcinoma using Phospho-CDK2-T160 Rabbit pAb (AP0325). Perform microwave antigen retrieval with 10 mM Tris/EDTA buffer pH 9.0 before commencing with IHC staining protocol.