

AP0232

Leader in Biomolecular Solutions for Life Science



## Phospho-BRCA1-S1423 Rabbit pAb

Catalog No.: AP0232

### Basic Information

**Observed MW**

270kDa

**Calculated MW**

208kDa

**Category**

Polyclonal Antibody

**Applications**

WB, IHC-P, IF/ICC, ELISA

**Cross-Reactivity**

Human, Mouse, Rat

### Background

This gene encodes a 190 kD nuclear phosphoprotein that plays a role in maintaining genomic stability, and it also acts as a tumor suppressor. The BRCA1 gene contains 22 exons spanning about 110 kb of DNA. The encoded protein combines with other tumor suppressors, DNA damage sensors, and signal transducers to form a large multi-subunit protein complex known as the BRCA1-associated genome surveillance complex (BASC). This gene product associates with RNA polymerase II, and through the C-terminal domain, also interacts with histone deacetylase complexes. This protein thus plays a role in transcription, DNA repair of double-stranded breaks, and recombination. Mutations in this gene are responsible for approximately 40% of inherited breast cancers and more than 80% of inherited breast and ovarian cancers. Alternative splicing plays a role in modulating the subcellular localization and physiological function of this gene. Many alternatively spliced transcript variants, some of which are disease-associated mutations, have been described for this gene, but the full-length nature of only some of these variants has been described. A related pseudogene, which is also located on chromosome 17, has been identified.

### Recommended Dilutions

<b>WB</b>	1:500 - 1:2000
<b>IHC-P</b>	1:50 - 1:200
<b>IF/ICC</b>	1:50 - 1:200

### Immunogen Information

**Gene ID**

672

**Swiss Prot**

P38398

**Immunogen**

A synthetic phosphorylated peptide around S1423 of human BRCA1 (NP\_009225.1).

**Synonyms**

IRIS; PSCP; BRCAI; BRCC1; FANCS; PNCA4; RNF53; BROVCA1; PPP1R53; Phospho-BRCA1-S1423

### Contact



[www.abclonal.com](http://www.abclonal.com)

### Product Information

**Source**

Rabbit

**Isotype**

IgG

**Purification**

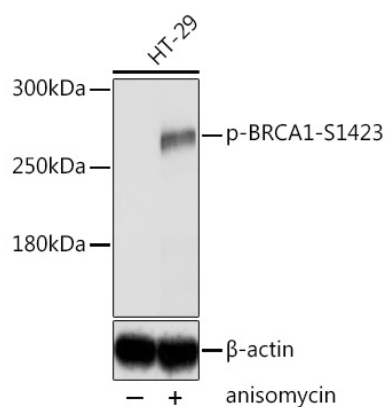
Affinity purification

**Storage**

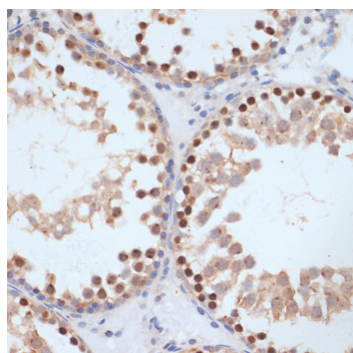
Store at -20°C. Avoid freeze / thaw cycles.

Buffer: PBS with 0.02% sodium azide, 50% glycerol, pH 7.3.

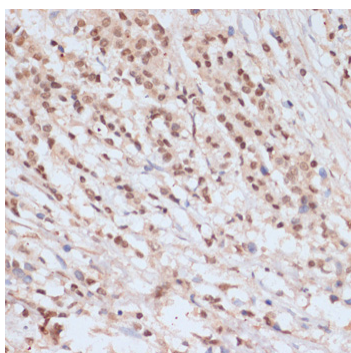
## Validation Data



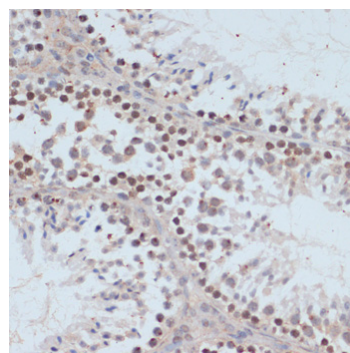
Western blot analysis of extracts of HT-29 cells, using Phospho-BRCA1-S1423 antibody (AP0232) at 1:2000 dilution. HT-29 cells were treated by Anisomycin (5 $\mu$ g/mL) for 30 minutes after serum-starvation overnight.  
 Secondary antibody: HRP Goat Anti-Rabbit IgG (H+L) (AS014) at 1:10000 dilution.  
 Lysates/proteins: 25 $\mu$ g per lane.  
 Blocking buffer: 3% BSA.  
 Detection: ECL Basic Kit (RM00020).  
 Exposure time: 5s.



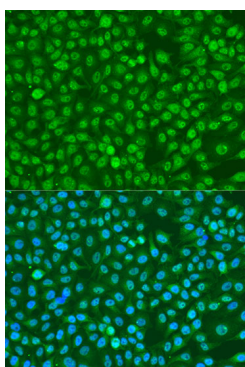
Immunohistochemistry analysis of paraffin-embedded rat testis using Phospho-BRCA1-S1423 antibody (AP0232) at dilution of 1:100 (40x lens). Perform microwave antigen retrieval with 10 mM Tris/EDTA buffer pH 9.0 before commencing with IHC staining protocol.



Immunohistochemistry analysis of paraffin-embedded human breast cancer using Phospho-BRCA1-S1423 antibody (AP0232) at dilution of 1:100 (40x lens). Perform microwave antigen retrieval with 10 mM Tris/EDTA buffer pH 9.0 before commencing with IHC staining protocol.



Immunohistochemistry analysis of paraffin-embedded mouse testis using Phospho-BRCA1-S1423 antibody (AP0232) at dilution of 1:100 (40x lens). Perform microwave antigen retrieval with 10 mM Tris/EDTA buffer pH 9.0 before commencing with IHC staining protocol.



Immunofluorescence analysis of U2OS cells using Phospho-BRCA1-S1423 antibody (AP0232) at dilution of 1:100. Blue: DAPI for nuclear staining.