

AP0178

Leader in Biomolecular Solutions for Life Science



## Phospho-CFL1-S3 Rabbit pAb

Catalog No.: AP0178

4 Publications

### Basic Information

#### Observed MW

18kDa

#### Calculated MW

19kDa

#### Category

Polyclonal Antibody

#### Applications

WB, IHC-P, IF/ICC, ELISA

#### Cross-Reactivity

Human, Mouse, Rat

### Background

The protein encoded by this gene can polymerize and depolymerize F-actin and G-actin in a pH-dependent manner. Increased phosphorylation of this protein by LIM kinase aids in Rho-induced reorganization of the actin cytoskeleton. Cofilin is a widely distributed intracellular actin-modulating protein that binds and depolymerizes filamentous F-actin and inhibits the polymerization of monomeric G-actin in a pH-dependent manner. It is involved in the translocation of actin-cofilin complex from cytoplasm to nucleus.

### Recommended Dilutions

WB	1:500 - 1:2000
IHC-P	1:50 - 1:100
IF/ICC	1:100 - 1:200

### Immunogen Information

#### Gene ID

1072

#### Swiss Prot

P23528

#### Immunogen

A synthetic phosphorylated peptide around S3 of human CFL1 (NP\_005498.1).

#### Synonyms

CFL; cofilin; HEL-S-15; Phospho-CFL1-S3

### Contact



[www.abclonal.com](http://www.abclonal.com)

### Product Information

#### Source

Rabbit

#### Isotype

IgG

#### Purification

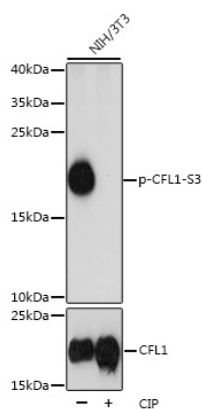
Affinity purification

#### Storage

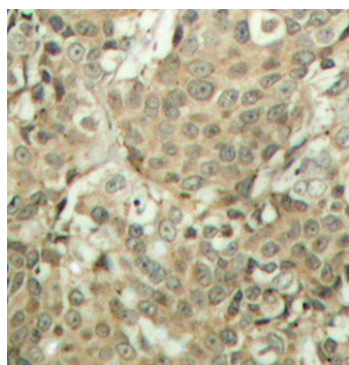
Store at -20°C. Avoid freeze / thaw cycles.

Buffer: PBS with 0.01% thimerosal, 50% glycerol, pH7.3.

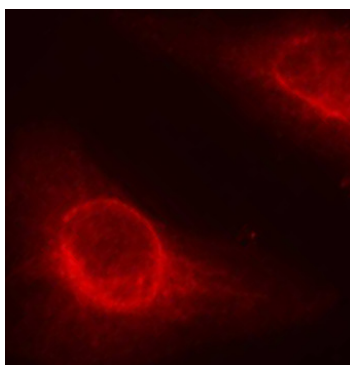
## Validation Data



Western blot analysis of lysates from NIH/3T3 cells, using Phospho-CFL1-S3 Rabbit pAb (A1704). NIH/3T3 cells were treated by CIP (20uL/400uL) at 37°C for 1 hour.  
Secondary antibody: HRP Goat Anti-Rabbit IgG (H+L) (AS014) at 1:10000 dilution.  
Lysates/proteins: 25µg per lane.  
Blocking buffer: 3% BSA.  
Detection: ECL Basic Kit (RM00020).  
Exposure time: 3s.



Immunohistochemistry analysis of Phospho-CFL1-S3 in paraffin-embedded human breast carcinoma tissue, using Phospho-CFL1-S3 Rabbit pAb (AP0178). Perform microwave antigen retrieval with 10 mM Tris/EDTA buffer pH 9.0 before commencing with IHC staining protocol.



Immunofluorescence analysis of methanol-fixed HeLa cells using Phospho-CFL1-S3 Rabbit pAb (AP0178).