

AP0073

Leader in Biomolecular Solutions for Life Science



Phospho-MDM2-S166 Rabbit pAb

Catalog No.: AP0073

1 Publications

Basic Information

Observed MW

95kDa

Calculated MW

55kDa

Category

Polyclonal Antibody

Applications

WB,IF/ICC,ELISA

Cross-Reactivity

Human,Mouse,Rat

Background

This gene encodes a nuclear-localized E3 ubiquitin ligase. The encoded protein can promote tumor formation by targeting tumor suppressor proteins, such as p53, for proteasomal degradation. This gene is itself transcriptionally-regulated by p53. Overexpression or amplification of this locus is detected in a variety of different cancers. There is a pseudogene for this gene on chromosome 2. Alternative splicing results in a multitude of transcript variants, many of which may be expressed only in tumor cells.

Recommended Dilutions

WB 1:500 - 1:1000

IF/ICC 1:50 - 1:200

Immunogen Information

Gene ID

4193

Swiss Prot

Q00987

Immunogen

A synthetic phosphorylated peptide around S166 of human MDM2 (NP_002383.2).

Synonyms

HDMX; LSKB; hdm2; ACTFS; Phospho-MDM2-S166

Contact



www.abclonal.com

Product Information

Source

Rabbit

Isotype

IgG

Purification

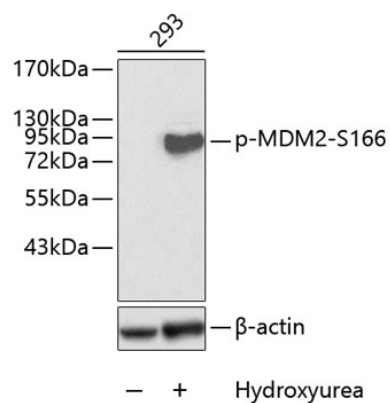
Affinity purification

Storage

Store at -20°C. Avoid freeze / thaw cycles.

Buffer: PBS with 0.02% sodium azide,50% glycerol,pH7.3.

Validation Data

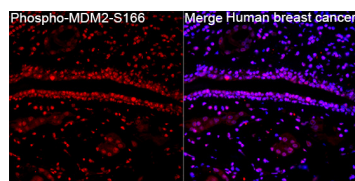


Western blot analysis of lysates from 293 cells, using Phospho-MDM2-S166 Rabbit pAb (AP0073). 293 cells were treated by Hydroxyurea (4mM) for 20 hours.

Secondary antibody: HRP Goat Anti-Rabbit IgG (H+L) (AS014) at 1:10000 dilution.

Lysates/proteins: 25μg per lane.

Blocking buffer: 3% BSA.



Immunofluorescence analysis of paraffin-embedded Human breast cancer tissue using Phospho-MDM2-S166 Rabbit pAb (AP0073) at a dilution of 1:100 (40x lens). Secondary antibody: Cy3 Goat Anti-Rabbit IgG (H+L) (AS007) at 1:500 dilution. Blue: DAPI for nuclear staining. Perform high pressure antigen retrieval with 0.01 M citrate buffer (pH 6.0) prior to IF staining.