

AE171

Leader in Biomolecular Solutions for Life Science



mCherry Rabbit pAb

Catalog No.: AE171

Basic Information

Observed MW

55kDa

Calculated MW

Category

Polyclonal Antibody

Applications

WB, ELISA

Cross-Reactivity

Species independent

Background

Protein tags are peptide sequences genetically grafted onto a recombinant protein. Often these tags are removable by chemical agents or by enzymatic means, such as proteolysis or intein splicing. Tags are attached to proteins for various purposes. Epitope tags are short peptide sequences which are chosen because high-affinity antibodies can be reliably produced in many different species. These are usually derived from viral genes, which explain their high immunoreactivity. Epitope tags include V5-tag, Myc-tag, HA-tag and NE-tag. These tags are particularly useful for western blotting, immunofluorescence and immunoprecipitation experiments, although they also find use in antibody purification.

Recommended Dilutions

WB 1:2000 - 1:10000

Immunogen Information

Gene ID

Swiss Prot

Immunogen

Recombinant fusion protein containing a sequence corresponding to amino acids 1-236 of mCherry tag.

Synonyms

mCherry; mCherry tag; mCherry-tag

Contact



www.abclonal.com

Product Information

Source

Rabbit

Isotype

IgG

Purification

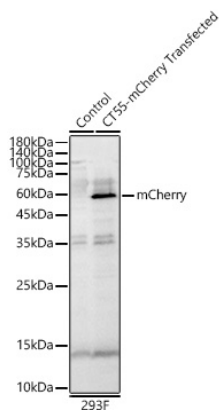
Affinity purification

Storage

Store at -20°C. Avoid freeze / thaw cycles.

Buffer: PBS with 0.05% proclin300, 50% glycerol, pH7.3.

Validation Data



Western blot analysis of lysates from wild type (WT) and 293F cells transfected with CT55-mCherry using mCherry Rabbit pAb(AE171) at 1:10000 dilution.
Secondary antibody: HRP Goat Anti-Rabbit IgG (H+L) (AS014) at 1:10000 dilution.
Lysates/proteins: 25 µg per lane.
Blocking buffer: 3% nonfat dry milk in TBST.
Detection: ECL Basic Kit (RM00020).
Exposure time: 1s.