

# Rabbit anti V5-Tag mAb

Catalog No.: AE089

## Basic Information

**Observed MW**

40kDa

**Calculated MW****Category**

Tag antibody

**Applications**

ELISA, WB, IF/ICC, IP, ChIP

**Cross-Reactivity**

Species independent

**CloneNo number**

ARC50445

## Background

Protein tags are peptide sequences genetically grafted onto a recombinant protein. Often these tags are removable by chemical agents or by enzymatic means, such as proteolysis or intein splicing. Tags are attached to proteins for various purposes. Epitope tags are short peptide sequences which are chosen because high-affinity antibodies can be reliably produced in many different species. These are usually derived from viral genes, which explain their high immunoreactivity. Epitope tags include V5-tag, Myc-tag, HA-tag and NE-tag. These tags are particularly useful for western blotting, immunofluorescence and immunoprecipitation experiments, although they also find use in antibody purification.

## Recommended Dilutions

**WB** 1:2000 - 1:6000**IF/ICC** 1:50 - 1:200**IP** 0.5µg-4µg antibody for  
200µg-400µg extracts of  
whole cells**ChIP** 3µg antibody for  
10µg-15µg of  
Chromatin

## Immunogen Information

**Gene ID****Swiss Prot****Immunogen**

A synthetic peptide corresponding to V5-Tag.

**Synonyms**

V5;V5 tag;V5-tag

## Contact

 | [www.abclonal.com](http://www.abclonal.com)

## Product Information

**Source**

Rabbit

**Isotype**

IgG

**Purification**

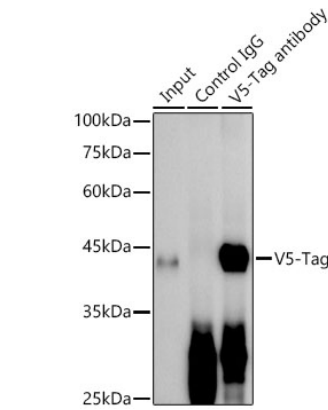
Affinity purification

**Storage**

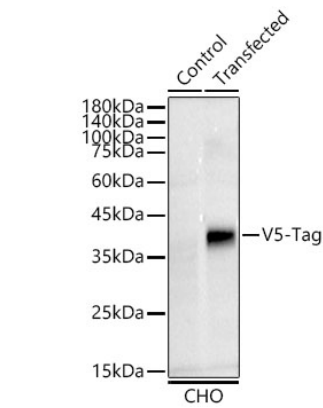
Store at -20°C. Avoid freeze / thaw cycles.

Buffer: PBS with 0.05% proclin300, 0.05% BSA, 50% glycerol, pH7.3.

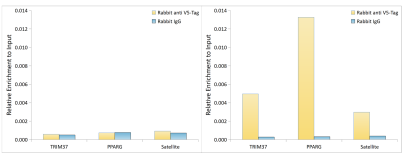
Validation Data



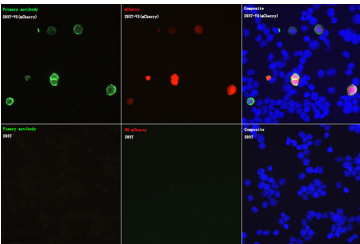
Immunoprecipitation analysis of 300 µg extracts of CHO-V5 cells using 30ug Rabbit anti V5-Tag antibody (AE089). Western blot was performed from the immunoprecipitate using Rabbit anti V5-Tag antibody (AE089) at a dilution of 1:3000.



Western blot analysis of lysates from CHO cells, using Rabbit anti V5-Tag mAb (AE089) at 1:5000 dilution.  
Secondary antibody: HRP Goat Anti-Rabbit IgG (H+L) (AS014) at 1:10000 dilution.  
Lysates/proteins: 25µg per lane.  
Blocking buffer: 3% nonfat dry milk in TBST.  
Detection: ECL Basic Kit (RM00020).  
Exposure time: 60s.



Chromatin immunoprecipitation was performed with 20 µg of cross-linked chromatin from 293F cells (left) and 293F cells transfected with a GATA3 expression vector containing a single C-terminal V5-Tag(right), using 2 µg of Rabbit anti V5-Tag mAb(AE089) and Rabbit IgG isotype control(AC042). The enrichment of immunoprecipitated DNA at different genomic loci was examined by quantitative PCR. The histogram compares the ratio of the immunoprecipitated DNA to the input at given loci.



## Validation Data

---

Immunofluorescence analysis of 293T cells transfected with V5(mCherry) protein and untreated 293T cells using Rabbit anti V5-Tag mAb (AE089) at dilution of 1:100 (40x lens). Secondary antibody: Cy3 Goat Anti-Rabbit IgG (H+L) (AS007) at 1:500 dilution. Blue: DAPI for nuclear staining.