

ACTB Monoclonal Antibody

Catalog No.	AC026	Category	Loading control Antibodies
Applications	WB, IHC	Observed MW	43kDa
Cross-reactivity	Human, Mouse, Rat, Chicken, Zebrafish, Pig, Oryza sativa	Calculated MW	41kDa

Immunogen Information

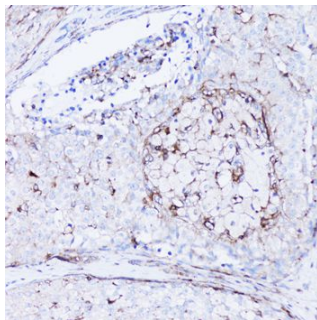
Immunogen	Recombinant protein of human β -actin
Gene ID	60
Swiss prot	P60709
Synonyms	BRWS1;PS1TP5BP1

Product information

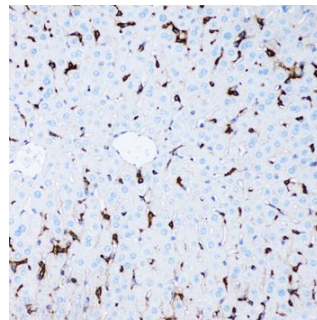
Source	Rabbit
Isotype	IgG
Purification method	Affinity purification
Storage	Store at -20°C. Avoid freeze / thaw cycles. Buffer: PBS with 0.02% sodium azide, 50% glycerol, pH7.3.

Background

This gene encodes one of six different actin proteins. Actins are highly conserved proteins that are involved in cell motility, structure, and integrity. This actin is a major constituent of the contractile apparatus and one of the two nonmuscle cytoskeletal actins.



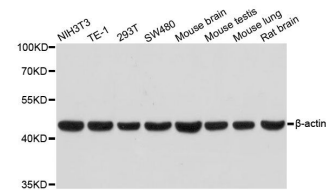
Immunohistochemistry of paraffin-embedded human breast cancer using β -actin antibody (AC026) at dilution of 1:100 (20x lens).



Immunohistochemistry of paraffin-embedded mouse liver using β -actin antibody (AC026) at dilution of 1:100 (20x lens).

Recommended Dilutions

WB	1:50000 - 1:200000
IHC	1:200 - 1:2000

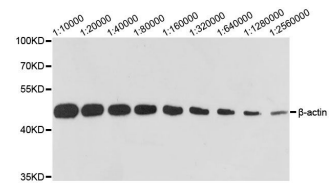


Western blot analysis of extracts of various cell lines, using β -actin antibody (AC026) at 1:100000 dilution.

Secondary antibody: HRP Goat Anti-Rabbit IgG (H+L) (AS014) at 1:10000 dilution.

Lysates/proteins: 25ug per lane.
Blocking buffer: 3% nonfat dry milk in TBST.

Detection: ECL Basic Kit (RM00020).
Exposure time: 30s.

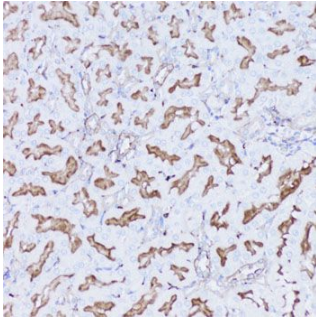


Western blot analysis of extracts of HeLa cells, using β -actin antibody (AC026) at 1:10000-1:2560000 dilution.

Secondary antibody: HRP Goat Anti-Rabbit IgG (H+L) (AS014) at 1:10000 dilution.

Lysates/proteins: 25ug per lane.
Blocking buffer: 3% nonfat dry milk in TBST.

Detection: ECL Basic Kit (RM00020).
Exposure time: 10s.



Immunohistochemistry of paraffin-embedded rat kidney using β -actin antibody (AC026) at dilution of 1:100 (20x lens).