

AC025

Leader in Biomolecular Solutions for Life Science



## Alpha-tubulin (ubiquitous) chain Rabbit pAb

Catalog No.: AC025

4 Publications

### Basic Information

#### Observed MW

50kDa

#### Calculated MW

50kDa

#### Category

Mouse Monoclonal Antibody

#### Applications

WB,IF/ICC

#### Cross-Reactivity

Human,Mouse,Rat

### Background

Enables double-stranded RNA binding activity and ubiquitin protein ligase binding activity. Predicted to be involved in microtubule cytoskeleton organization and mitotic cell cycle. Predicted to act upstream of or within cellular response to interleukin-4. Located in microtubule.

### Recommended Dilutions

WB	1:500 - 1:1000
IF/ICC	1:50 - 1:200

### Immunogen Information

Gene ID	Swiss Prot
10376	P68363

#### Immunogen

Recombinant fusion protein containing a sequence within amino acids 1-80 of human Alpha-tubulin (ubiquitous) chain (NP\_006073.2).

#### Synonyms

K-ALPHA-1; Alpha-tubulin (ubiquitous) chain

### Contact



[www.abclonal.com](http://www.abclonal.com)

### Product Information

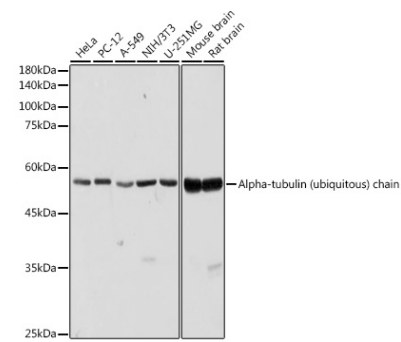
Source	Isotype	Purification
Rabbit	IgG	Affinity purification

#### Storage

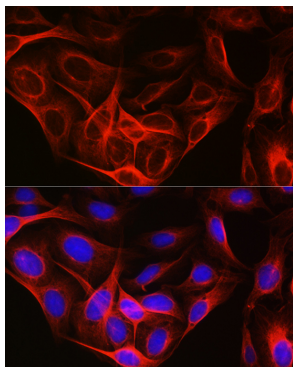
Store at -20°C. Avoid freeze / thaw cycles.

Buffer: PBS with 0.01% thimerosal,50% glycerol,pH7.3.

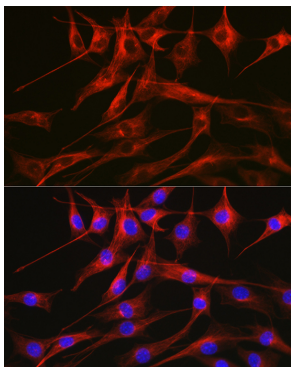
Validation Data



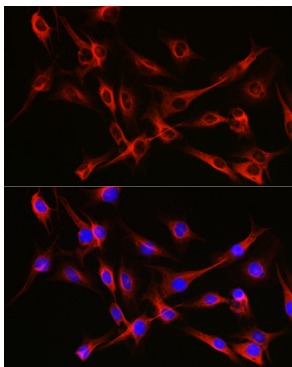
Western blot analysis of various lysates using Alpha-tubulin (ubiquitous) chain Rabbit pAb (AC025) at 1:1000 dilution.  
Secondary antibody: HRP Goat Anti-Rabbit IgG (H+L) (AS014) at 1:10000 dilution.  
Lysates/proteins: 25µg per lane.  
Blocking buffer: 3% nonfat dry milk in TBST.  
Detection: ECL Basic Kit (RM00020).  
Exposure time: 1s.



Immunofluorescence analysis of U2OS cells using Alpha-tubulin (ubiquitous) chain Rabbit pAb (AC025) at dilution of 1:100. Secondary antibody: Cy3 Goat Anti-Rabbit IgG (H+L) (AS007) at 1:500 dilution. Blue: DAPI for nuclear staining.



Immunofluorescence analysis of NIH/3T3 cells using Alpha-tubulin (ubiquitous) chain Rabbit pAb (AC025) at dilution of 1:100. Secondary antibody: Cy3 Goat Anti-Rabbit IgG (H+L) (AS007) at 1:500 dilution. Blue: DAPI for nuclear staining.



Immunofluorescence analysis of C6 cells using Alpha-tubulin (ubiquitous) chain Rabbit pAb (AC025) at dilution of 1:100. Secondary antibody: Cy3 Goat Anti-Rabbit IgG (H+L) (AS007) at 1:500 dilution. Blue: DAPI for nuclear staining.