

## alpha Tubulin Monoclonal Antibody

<b>Catalog No.</b>	AC012	<b>Category</b>	Loading control Antibodies
<b>Applications</b>	WB, IHC, IF, IP	<b>Observed MW</b>	55kDa
<b>Cross-reactivity</b>	Human, Mouse, Rat	<b>Calculated MW</b>	48kDa/49kDa

### Immunogen Information

<b>Immunogen</b>	Recombinant protein of human TUBA1B
<b>Gene ID</b>	7277
<b>Swiss prot</b>	P68366
<b>Synonyms</b>	ALS22;H2-ALPHA;TUBA1

### Product information

<b>Source</b>	Mouse
<b>Isotype</b>	IgG
<b>Purification method</b>	Affinity purification
<b>Storage</b>	Store at -20°C. Avoid freeze / thaw cycles. Buffer: PBS with 0.02% sodium azide, 50% glycerol, pH7.3.

### Background

Microtubules of the eukaryotic cytoskeleton perform essential and diverse functions and are composed of a heterodimer of alpha and beta tubulin. The genes encoding these microtubule constituents are part of the tubulin superfamily, which is composed of six distinct families. Genes from the alpha, beta and gamma tubulin families are found in all eukaryotes. The alpha and beta tubulins represent the major components of microtubules, while gamma tubulin plays a critical role in the nucleation of microtubule assembly. There are multiple alpha and beta tubulin genes and they are highly conserved among and between species. This gene encodes an alpha tubulin that is a highly conserved homolog of a rat testis-specific alpha tubulin. Alternatively spliced transcript variants encoding different isoforms have been found for this gene.

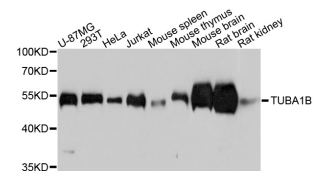
### Recommended Dilutions

WB 1:5000 -  
1:15000

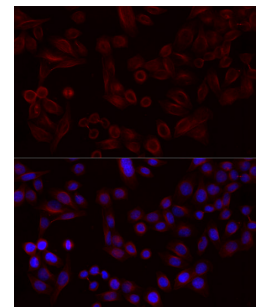
IHC 1:200 -  
1:500

IF 1:100 -  
1:200

IP 1:100 -  
1:200



Western blot - alpha Tubulin Monoclonal Antibody (AC012)



Immunofluorescence - alpha Tubulin Monoclonal Antibody (AC012)