

β-Tubulin Polyclonal Antibody

Catalog No.	AC008	Category	Loading control Antibodies
Applications	WB	Observed MW	50kDa
Cross-reactivity	Human, Mouse, Rat	Calculated MW	50kDa

Immunogen Information

Immunogen	Recombinant fusion protein containing a sequence corresponding to amino acids 40-260 of human β-Tubulin (NP_006077.2).
Gene ID	203068
Swiss prot	P07437
Synonyms	

Product information

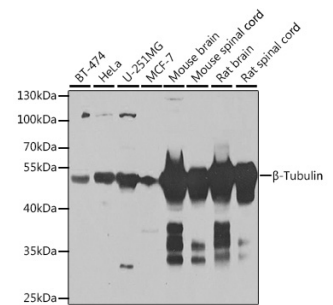
Source	Rabbit
Isotype	IgG
Purification method	Affinity purification
Storage	Store at -20°C. Avoid freeze / thaw cycles. Buffer: PBS with 0.02% sodium azide, 50% glycerol, pH7.3.

Background

This gene encodes a beta tubulin protein. This protein forms a dimer with alpha tubulin and acts as a structural component of microtubules. Mutations in this gene cause cortical dysplasia, complex, with other brain malformations 6. Alternative splicing results in multiple splice variants. There are multiple pseudogenes for this gene on chromosomes 1, 6, 7, 8, 9, and 13.

Recommended Dilutions

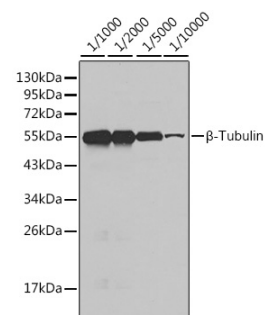
WB 1:500 - 1:5000



Western blot analysis of extracts of various cell lines, using β-Tubulin antibody (AC008) at 1:1000 dilution. Secondary antibody: HRP Goat Anti-Rabbit IgG (H+L) (AS014) at 1:10000 dilution.

Lysates/proteins: 25ug per lane.
Blocking buffer: 3% nonfat dry milk in TBST.

Detection: ECL Basic Kit (RM00020).
Exposure time: 90s.



Western blot analysis of HeLa cell using β-tubulin antibody (AC008) at different dilution. Each lane was loaded with 10 ug cell lysate.

Secondary antibody: HRP Goat Anti-Rabbit IgG (H+L) (AS014) at 1:10000 dilution.

Lysates/proteins: 25ug per lane.
Blocking buffer: 3% nonfat dry milk in TBST.