

# UBE2Q2 Rabbit pAb

Catalog No.: A9992 **1 Publications**

## Basic Information

### Observed MW

43kDa

### Calculated MW

43kDa

### Category

Primary antibody

### Applications

ELISA, WB

### Cross-Reactivity

Human, Mouse

## Background

Enables ubiquitin-protein transferase activity. Involved in protein K48-linked ubiquitination. Predicted to be located in cytosol. Predicted to be active in nucleus.

## Recommended Dilutions

**WB** 1:500 - 1:2000

## Immunogen Information

### Gene ID

92912

### Swiss Prot

Q8WVN8

### Immunogen

Recombinant fusion protein containing a sequence corresponding to amino acids 1-150 of human UBE2Q2 (NP\_775740.1).

### Synonyms

UBE2Q2

## Contact

 | [www.abclonal.com](http://www.abclonal.com)

## Product Information

### Source

Rabbit

### Isotype

IgG

### Purification

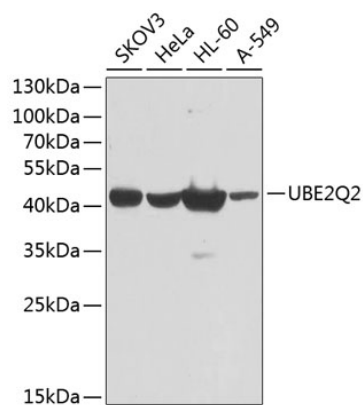
Affinity purification

### Storage

Store at -20°C. Avoid freeze / thaw cycles.

Buffer: PBS with 0.02% sodium azide, 50% glycerol, pH7.3.

## Validation Data



Western blot analysis of extracts of various cell lines, using UBE2Q2 antibody (A9992) at 1:1000 dilution.

Secondary antibody: HRP Goat Anti-Rabbit IgG (H+L) (A5014) at 1:10000 dilution.

Lysates/proteins: 25µg per lane.

Blocking buffer: 3% nonfat dry milk in TBST.

Detection: ECL Basic Kit (RM00020).

Exposure time: 60s.