

KLHL13 Rabbit pAb

Catalog No.: A9989

Basic Information

Observed MW

60kDa

Calculated MW

74kDa

Category

Primary antibody

Applications

ELISA, WB

Cross-Reactivity

Human, Mouse

Background

This gene encodes a BTB and kelch domain containing protein and belongs to the kelch repeat domain containing superfamily of proteins. The encoded protein functions as an adaptor protein that complexes with Cullin 3 and other proteins to form the Cullin 3-based E3 ubiquitin-protein ligase complex. This complex is necessary for proper chromosome segregation and completion of cytokinesis. Alternate splicing results in multiple transcript variants.

Recommended Dilutions

WB 1:500 - 1:2000

Immunogen Information

Gene ID

90293

Swiss Prot

Q9P2N7

Immunogen

Recombinant fusion protein containing a sequence corresponding to amino acids 1-260 of human KLHL13 (NP_277030.2).

Synonyms

BKLHD2; KLHL13

Contact

 | www.abclonal.com

Product Information

Source

Rabbit

Isotype

IgG

Purification

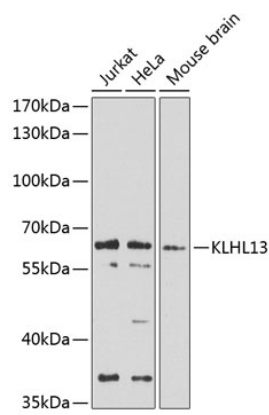
Affinity purification

Storage

Store at -20°C. Avoid freeze / thaw cycles.

Buffer: PBS with 0.02% sodium azide, 50% glycerol, pH7.3.

Validation Data



Western blot analysis of extracts of various cell lines, using KLHL13 antibody (A9989) at 1:1000 dilution.
Secondary antibody: HRP Goat Anti-Rabbit IgG (H+L) (A5014) at 1:10000 dilution.
Lysates/proteins: 25µg per lane.
Blocking buffer: 3% nonfat dry milk in TBST.
Detection: ECL Basic Kit (RM00020).
Exposure time: 10s.