

## [KO Validated] SETD7 Polyclonal Antibody

<b>Catalog No.</b>	A9985	<b>Category</b>	Polyclonal Antibodies
<b>Applications</b>	WB, IF	<b>Observed MW</b>	41kDa
<b>Cross-reactivity</b>	Human, Mouse, Rat	<b>Calculated MW</b>	40kDa

### Immunogen Information

<b>Immunogen</b>	Recombinant fusion protein containing a sequence corresponding to amino acids 1-366 of human SETD7 (NP_085151.1).
<b>Gene ID</b>	80854
<b>Swiss prot</b>	Q8WTS6
<b>Synonyms</b>	SETD7; KMT7; SET7; SET7/9; SET9; histone-lysine N-methyltransferase SETD7

### Product information

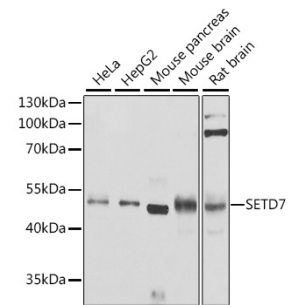
<b>Source</b>	Rabbit
<b>Isotype</b>	IgG
<b>Purification method</b>	Affinity purification
<b>Storage</b>	Store at -20°C. Avoid freeze / thaw cycles. Buffer: PBS with 0.02% sodium azide, 50% glycerol, pH7.3.

### Background

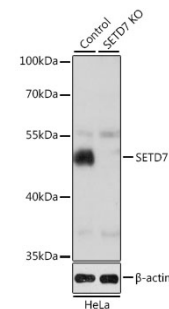
### Recommended Dilutions

WB 1:500 -  
1:2000

IF 1:50 -  
1:200



Western blot - [KO Validated] SETD7 Polyclonal Antibody (A9985)



Western blot - [KO Validated] SETD7 Polyclonal Antibody (A9985)