

A9962

Leader in Biomolecular Solutions for Life Science



RGS14 Rabbit pAb

Catalog No.: A9962

Basic Information

Observed MW

54kDa

Calculated MW

61kDa

Category

Polyclonal Antibody

Applications

WB,IHC-P,ELISA

Cross-Reactivity

Human,Mouse,Rat

Background

This gene encodes a member of the regulator of G-protein signaling family. This protein contains one RGS domain, two Raf-like Ras-binding domains (RBDs), and one GoLoco domain. The protein attenuates the signaling activity of G-proteins by binding, through its GoLoco domain, to specific types of activated, GTP-bound G alpha subunits. Acting as a GTPase activating protein (GAP), the protein increases the rate of conversion of the GTP to GDP. This hydrolysis allows the G alpha subunits to bind G beta/gamma subunit heterodimers, forming inactive G-protein heterotrimers, thereby terminating the signal. Alternate transcriptional splice variants of this gene have been observed but have not been thoroughly characterized.

Recommended Dilutions

WB	1:500 - 1:2000
IHC-P	1:50 - 1:200

Immunogen Information

Gene ID

10636

Swiss Prot

O43566

Immunogen

Recombinant fusion protein containing a sequence corresponding to amino acids 230-510 of human RGS14 (NP_006471.2).

Synonyms

RGS14

Contact



www.abclonal.com

Product Information

Source

Rabbit

Isotype

IgG

Purification

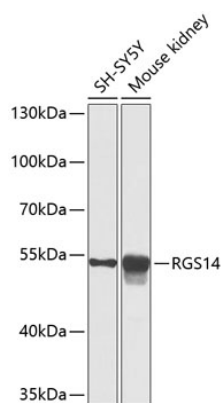
Affinity purification

Storage

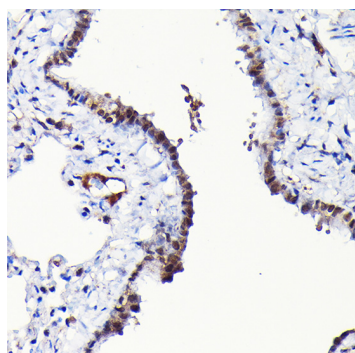
Store at -20°C. Avoid freeze / thaw cycles.

Buffer: PBS with 0.02% sodium azide,50% glycerol,pH7.3.

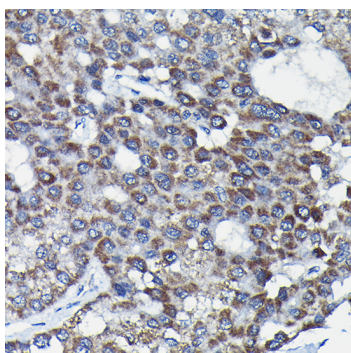
Validation Data



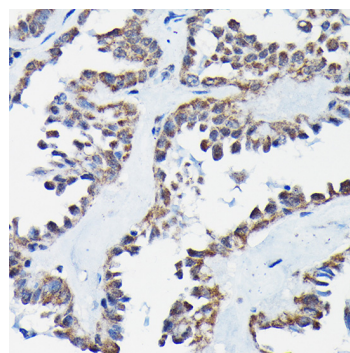
Western blot analysis of extracts of various cell lines, using RGS14 antibody (A9962) at 1:1000 dilution.
Secondary antibody: HRP Goat Anti-Rabbit IgG (H+L) (AS014) at 1:10000 dilution.
Lysates/proteins: 25µg per lane.
Blocking buffer: 3% nonfat dry milk in TBST.
Detection: ECL Basic Kit (RM00020).
Exposure time: 60s.



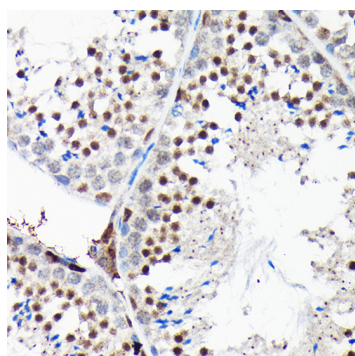
Immunohistochemistry analysis of paraffin-embedded rat lung using RGS14 Rabbit pAb (A9962) at dilution of 1:100 (40x lens). Perform high pressure antigen retrieval with 10 mM citrate buffer pH 6.0 before commencing with IHC staining protocol.



Immunohistochemistry analysis of paraffin-embedded human liver cancer using RGS14 Rabbit pAb (A9962) at dilution of 1:100 (40x lens). Perform high pressure antigen retrieval with 10 mM citrate buffer pH 6.0 before commencing with IHC staining protocol.



Immunohistochemistry analysis of paraffin-embedded human thyroid cancer using RGS14 Rabbit pAb (A9962) at dilution of 1:100 (40x lens). Perform high pressure antigen retrieval with 10 mM citrate buffer pH 6.0 before commencing with IHC staining protocol.



Immunohistochemistry analysis of paraffin-embedded mouse testis using RGS14 Rabbit pAb (A9962) at dilution of 1:100 (40x lens). Perform high pressure antigen retrieval with 10 mM citrate buffer pH 6.0 before commencing with IHC staining protocol.