

A9960

Leader in Biomolecular Solutions for Life Science



## SAE1 Rabbit pAb

Catalog No.: A9960

### Basic Information

**Observed MW**

38kDa

**Calculated MW**

38kDa

**Category**

Polyclonal Antibody

**Applications**

WB, ELISA

**Cross-Reactivity**

Human, Mouse

### Background

Posttranslational modification of proteins by the addition of the small protein SUMO (see SUMO1; MIM 601912), or sumoylation, regulates protein structure and intracellular localization. SAE1 and UBA2 (MIM 613295) form a heterodimer that functions as a SUMO-activating enzyme for the sumoylation of proteins (Okuma et al., 1999 [PubMed 9920803]).

### Recommended Dilutions

WB 1:500 - 1:2000

### Immunogen Information

**Gene ID**

10055

**Swiss Prot**

Q9UBE0

**Immunogen**

Recombinant fusion protein containing a sequence corresponding to amino acids 1-346 of human SAE1 (NP\_005491.1).

**Synonyms**

AOS1; SUA1; UBLE1A; HSPC140; SAE1

### Contact



[www.abclonal.com](http://www.abclonal.com)

### Product Information

**Source**

Rabbit

**Isotype**

IgG

**Purification**

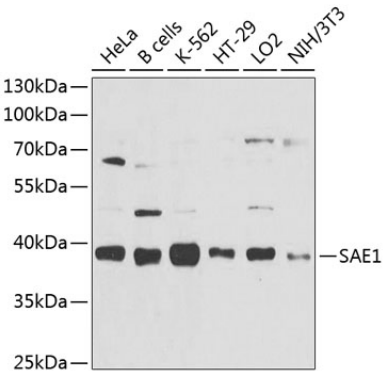
Affinity purification

**Storage**

Store at -20°C. Avoid freeze / thaw cycles.

Buffer: PBS with 0.02% sodium azide, 50% glycerol, pH 7.3.

Validation Data



Western blot analysis of extracts of various cell lines, using SAE1 antibody (A9960) at 1:1000 dilution.  
Secondary antibody: HRP Goat Anti-Rabbit IgG (H+L) (AS014) at 1:10000 dilution.  
Lysates/proteins: 25µg per lane.  
Blocking buffer: 3% nonfat dry milk in TBST.  
Detection: ECL Basic Kit (RM00020).  
Exposure time: 90s.