

A9957

Leader in Biomolecular Solutions for Life Science



# SOCS6 Rabbit pAb

Catalog No.: A9957

## Basic Information

### Observed MW

70kDa

### Calculated MW

60kDa

### Category

Polyclonal Antibody

### Applications

WB, IHC-P, ELISA

### Cross-Reactivity

Human, Mouse

## Background

The protein encoded by this gene contains a SH2 domain and a CIS homolog domain. The protein thus belongs to the cytokine-induced STAT inhibitor (CIS), also known as suppressor of cytokine signaling (SOCS) or STAT-induced STAT inhibitor (SSI), protein family. CIS family members are known to be cytokine-inducible negative regulators of cytokine signaling. The expression of this gene can be induced by GM-CSF and EPO in hematopoietic cells. A high expression level of this gene was found in factor-independent chronic myelogenous leukemia (CML) and erythroleukemia (HEL) cell lines.

## Recommended Dilutions

WB	1:500 - 1:2000
IHC-P	1:50 - 1:200

## Immunogen Information

### Gene ID

9306

### Swiss Prot

O14544

### Immunogen

Recombinant fusion protein containing a sequence corresponding to amino acids 1-210 of human SOCS6 (NP\_004223.2).

### Synonyms

CIS4; SSI4; CIS-4; SOCS4; STAI4; SOCS-4; SOCS-6; STATI4; HSPC060; SOCS6

## Contact



[www.abclonal.com](http://www.abclonal.com)

## Product Information

### Source

Rabbit

### Isotype

IgG

### Purification

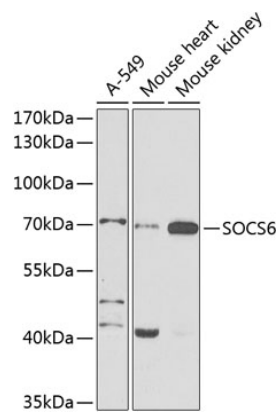
Affinity purification

### Storage

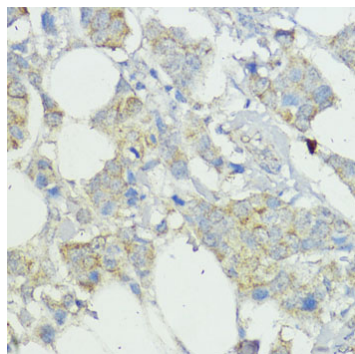
Store at -20°C. Avoid freeze / thaw cycles.

Buffer: PBS with 0.02% sodium azide, 50% glycerol, pH7.3.

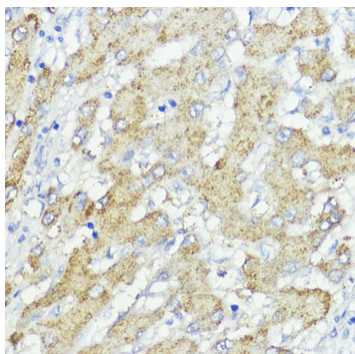
Validation Data



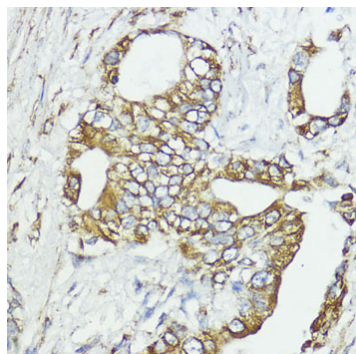
Western blot analysis of extracts of various cell lines, using SOCS6 antibody (A9957) at 1:1000 dilution. Secondary antibody: HRP Goat Anti-Rabbit IgG (H+L) (AS014) at 1:10000 dilution. Lysates/proteins: 25µg per lane. Blocking buffer: 3% nonfat dry milk in TBST. Detection: ECL Basic Kit (RM00020). Exposure time: 30s.



Immunohistochemistry analysis of paraffin-embedded human mammary cancer using SOCS6 antibody (A9957) at dilution of 1:100 (40x lens). Perform microwave antigen retrieval with 10 mM PBS buffer pH 7.2 before commencing with IHC staining protocol.



Immunohistochemistry analysis of paraffin-embedded human liver cancer using SOCS6 antibody (A9957) at dilution of 1:100 (40x lens). Perform microwave antigen retrieval with 10 mM PBS buffer pH 7.2 before commencing with IHC staining protocol.



Immunohistochemistry analysis of paraffin-embedded human lung cancer using SOCS6 antibody (A9957) at dilution of 1:100 (40x lens). Perform microwave antigen retrieval with 10 mM PBS buffer pH 7.2 before commencing with IHC staining protocol.