

A9950

Leader in Biomolecular Solutions for Life Science



BAF60a Rabbit pAb

Catalog No.: A9950

Basic Information

Observed MW

58kDa

Calculated MW

58kDa

Category

Mouse Monoclonal Antibody

Applications

WB, IHC-P, ELISA

Cross-Reactivity

Human, Mouse, Rat

Background

Predicted to enable several functions, including chromatin binding activity; molecular adaptor activity; and transcription coregulator activity. Predicted to be involved in epigenetic maintenance of chromatin in transcription-competent conformation; nucleosome disassembly; and regulation of transcription by RNA polymerase II. Predicted to act upstream of or within chromatin organization and nervous system development. Part of SWI/SNF complex; nBAF complex; and npBAF complex. Is expressed in several structures, including central nervous system; dorsal root ganglion; early conceptus; genitourinary system; and retina layer. Human ortholog(s) of this gene implicated in Coffin-Siris syndrome. Orthologous to human SMARCD1 (SWI/SNF related, matrix associated, actin dependent regulator of chromatin, subfamily d, member 1).

Recommended Dilutions

WB 1:500 - 1:2000

IHC-P 1:50 - 1:200

Immunogen Information

Gene ID

83797

Swiss Prot

Q96GM5

Immunogen

Recombinant fusion protein containing a sequence corresponding to amino acids 1-120 of mouse BAF60a (NP_114030.2).

Synonyms

Baf60a; D15Kz1; BAF60a

Contact



www.abclonal.com

Product Information

Source

Rabbit

Isotype

IgG

Purification

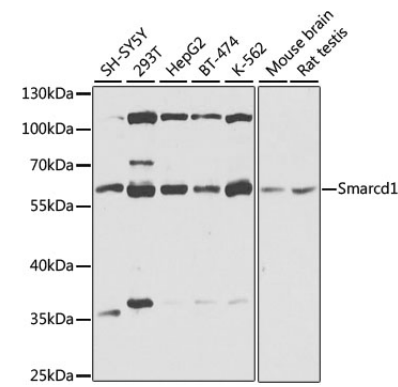
Affinity purification

Storage

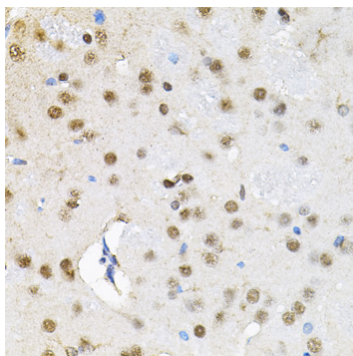
Store at -20°C. Avoid freeze / thaw cycles.

Buffer: PBS with 0.02% sodium azide, 50% glycerol, pH 7.3.

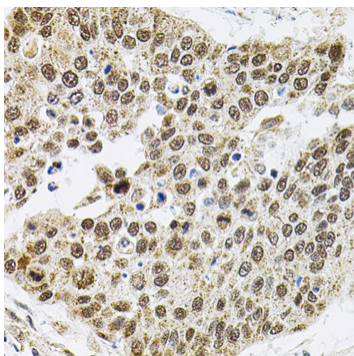
Validation Data



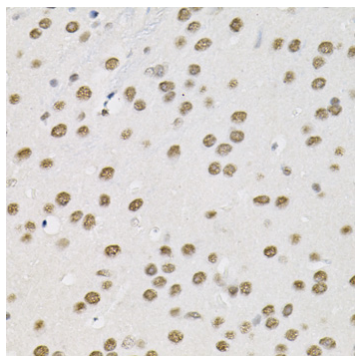
Western blot analysis of extracts of various cell lines, using Smarcd1 antibody (A9950) at 1:1000 dilution. Secondary antibody: HRP Goat Anti-Rabbit IgG (H+L) (A5014) at 1:10000 dilution. Lysates/proteins: 25µg per lane. Blocking buffer: 3% nonfat dry milk in TBST. Detection: ECL Basic Kit (RM00020). Exposure time: 15s.



Immunohistochemistry analysis of paraffin-embedded rat brain using Smarcd1 antibody (A9950) (40x lens). Perform microwave antigen retrieval with 10 mM PBS buffer pH 7.2 before commencing with IHC staining protocol.



Immunohistochemistry analysis of paraffin-embedded human lung cancer using Smarcd1 antibody (A9950) (40x lens). Perform microwave antigen retrieval with 10 mM PBS buffer pH 7.2 before commencing with IHC staining protocol.



Immunohistochemistry analysis of paraffin-embedded mouse brain using Smarcd1 antibody (A9950) at dilution of 1:100 (40x lens). Perform microwave antigen retrieval with 10 mM PBS buffer pH 7.2 before commencing with IHC staining protocol.