

A9944

Leader in Biomolecular Solutions for Life Science



## SERPINB6 Rabbit pAb

Catalog No.: A9944

### Basic Information

**Observed MW**

42kDa

**Calculated MW**

43kDa

**Category**

Polyclonal Antibody

**Applications**

WB, ELISA

**Cross-Reactivity**

Human, Mouse, Rat

### Background

The protein encoded by this gene is a member of the serpin (serine proteinase inhibitor) superfamily, and ovalbumin(ov)-serpin subfamily. It was originally discovered as a placental thrombin inhibitor. The mouse homolog was found to be expressed in the hair cells of the inner ear. Mutations in this gene are associated with nonsyndromic progressive hearing loss, suggesting that this serpin plays an important role in the inner ear in the protection against leakage of lysosomal content during stress, and that loss of this protection results in cell death and sensorineural hearing loss. Alternatively spliced transcript variants have been found for this gene.

### Recommended Dilutions

WB 1:500 - 1:1000

### Immunogen Information

**Gene ID**

5269

**Swiss Prot**

P35237

**Immunogen**

Recombinant fusion protein containing a sequence corresponding to amino acids 180-300 of human SERPINB6 (NP\_004559.4).

**Synonyms**

CAP; PI6; PTI; PI-6; SPI3; DFNB91; MSTP057; SERPINB6

### Contact



[www.abclonal.com](http://www.abclonal.com)

### Product Information

**Source**

Rabbit

**Isotype**

IgG

**Purification**

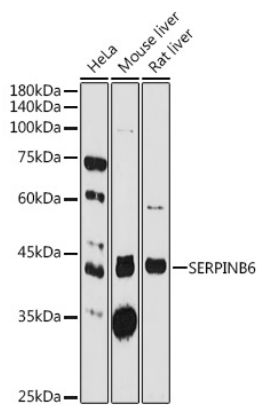
Affinity purification

**Storage**

Store at -20°C. Avoid freeze / thaw cycles.

Buffer: PBS with 0.02% sodium azide, 50% glycerol, pH 7.3.

## Validation Data



Western blot analysis of extracts of various cell lines, using SERPINB6 antibody (A9944) at 1:1000 dilution.  
Secondary antibody: HRP Goat Anti-Rabbit IgG (H+L) (AS014) at 1:10000 dilution.  
Lysates/proteins: 25µg per lane.  
Blocking buffer: 3% nonfat dry milk in TBST.  
Detection: ECL Basic Kit (RM00020).  
Exposure time: 180s.