

A9935

Leader in Biomolecular Solutions for Life Science



## KCNJ6 Rabbit pAb

Catalog No.: A9935

1 Publications

### Basic Information

#### Observed MW

48kDa

#### Calculated MW

48kDa

#### Category

Polyclonal Antibody

#### Applications

WB, ELISA

#### Cross-Reactivity

Human, Mouse

### Background

This gene encodes a member of the G protein-coupled inwardly-rectifying potassium channel family of inward rectifier potassium channels. This type of potassium channel allows a greater flow of potassium into the cell than out of it. These proteins modulate many physiological processes, including heart rate in cardiac cells and circuit activity in neuronal cells, through G-protein coupled receptor stimulation. Mutations in this gene are associated with Keppen-Lubinsky Syndrome, a rare condition characterized by severe developmental delay, facial dysmorphism, and intellectual disability.

### Recommended Dilutions

WB 1:500 - 1:2000

### Immunogen Information

#### Gene ID

3763

#### Swiss Prot

P48051

#### Immunogen

Recombinant fusion protein containing a sequence corresponding to amino acids 1-80 of human KCNJ6 (NP\_002231.1).

#### Synonyms

BIR1; GIRK2; KATP2; KCNJ7; KPLBS; GIRK-2; KATP-2; KIR3.2; hiGIRK2; KCNJ6

### Contact



[www.abclonal.com](http://www.abclonal.com)

### Product Information

#### Source

Rabbit

#### Isotype

IgG

#### Purification

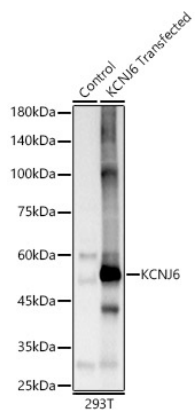
Affinity purification

#### Storage

Store at -20°C. Avoid freeze / thaw cycles.

Buffer: PBS with 0.02% sodium azide, 50% glycerol, pH 7.3.

## Validation Data



Western blot analysis of lysates from wild type (WT) and 293T cells transfected with KCNJ6 using KCNJ6 Rabbit pAb (A9935) at 1:1000 dilution.  
Secondary antibody: HRP Goat Anti-Rabbit IgG (H+L) (AS014) at 1:10000 dilution.  
Lysates/proteins: 25 µg per lane.  
Blocking buffer: 3% nonfat dry milk in TBST.  
Detection: ECL Basic Kit (RM00020).  
Exposure time: 10s.