

A9893

Leader in Biomolecular Solutions for Life Science



## MAGI3 Rabbit pAb

Catalog No.: A9893

### Basic Information

**Observed MW**

200kDa

**Calculated MW**

163kDa

**Category**

Polyclonal Antibody

**Applications**

WB, ELISA

**Cross-Reactivity**

Mouse

### Background

Predicted to enable frizzled binding activity. Predicted to be involved in signal transduction. Predicted to act upstream of or within positive regulation of JUN kinase activity. Located in cell junction.

### Recommended Dilutions

WB 1:500 - 1:2000

### Immunogen Information

**Gene ID**

260425

**Swiss Prot**

Q5TCQ9

**Immunogen**

Recombinant fusion protein containing a sequence corresponding to amino acids 1-105 of human MAGI3 (NP\_001136254.1).

**Synonyms**

MAGI-3; dj730K3.2; MAGI3

### Contact



[www.abclonal.com](http://www.abclonal.com)

### Product Information

**Source**

Rabbit

**Isotype**

IgG

**Purification**

Affinity purification

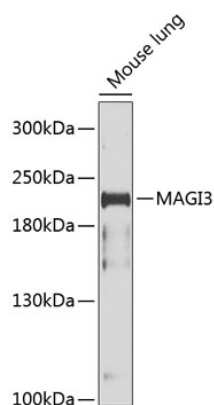
**Storage**

Store at -20°C. Avoid freeze / thaw cycles.

Buffer: PBS with 0.02% sodium azide, 50% glycerol, pH 7.3.

## Validation Data

---



Western blot analysis of lysates from mouse lung, using MAGI3 Rabbit pAb (A9893) at 1:1000 dilution.  
Secondary antibody: HRP Goat Anti-Rabbit IgG (H+L) (A5014) at 1:10000 dilution.  
Lysates/proteins: 25µg per lane.  
Blocking buffer: 3% nonfat dry milk in TBST.  
Detection: ECL Basic Kit (RM00020).  
Exposure time: 30s.