

A9891

Leader in Biomolecular Solutions for Life Science



EME2 Rabbit pAb

Catalog No.: A9891

Basic Information

Observed MW

41kDa

Calculated MW

41kDa

Category

Polyclonal Antibody

Applications

WB, ELISA

Cross-Reactivity

Human

Background

EME2 forms a heterodimer with MUS81 (MIM 606591) that functions as an XPF (MIM 278760)-type flap/fork endonuclease in DNA repair (Ciccia et al., 2007 [PubMed 17289582]).

Recommended Dilutions

WB 1:500 - 1:2000

Immunogen Information

Gene ID

197342

Swiss Prot

A4GXA9

Immunogen

Recombinant fusion protein containing a sequence corresponding to amino acids 1-220 of human EME2 (NP_001244299.1).

Synonyms

SLX2B; gs125; EME2

Contact



www.abclonal.com

Product Information

Source

Rabbit

Isotype

IgG

Purification

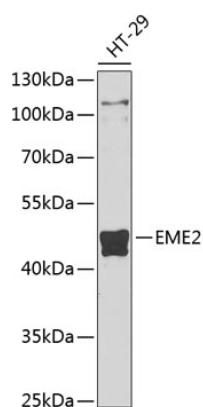
Affinity purification

Storage

Store at -20°C. Avoid freeze / thaw cycles.

Buffer: PBS with 0.02% sodium azide, 50% glycerol, pH 7.3.

Validation Data



Western blot analysis of lysates from HT-29 cells, using EME2 Rabbit pAb (A9891) at 1:1000 dilution.
Secondary antibody: HRP Goat Anti-Rabbit IgG (H+L) (A5014) at 1:10000 dilution.
Lysates/proteins: 25µg per lane.
Blocking buffer: 3% nonfat dry milk in TBST.
Detection: ECL Basic Kit (RM00020).
Exposure time: 15s.