

A9878

Leader in Biomolecular Solutions for Life Science



PBRM1 Rabbit pAb

Catalog No.: A9878

Basic Information

Observed MW

230kDa

Calculated MW

193kDa

Category

Polyclonal Antibody

Applications

WB,IP,ELISA

Cross-Reactivity

Human,Mouse,Rat

Background

This locus encodes a subunit of ATP-dependent chromatin-remodeling complexes. The encoded protein has been identified as an integral component of complexes necessary for ligand-dependent transcriptional activation by nuclear hormone receptors. Mutations at this locus have been associated with primary clear cell renal cell carcinoma.

Recommended Dilutions

WB 1:500 - 1:2000

IP 0.5µg-4µg antibody for
200µg-400µg extracts of
whole cells

Immunogen Information

Gene ID

55193

Swiss Prot

Q86U86

Immunogen

Recombinant fusion protein containing a sequence corresponding to amino acids 1-230 of human PBRM1 (NP_060783.3).

Synonyms

PB1; RCC; BAF180; SMARCH1; PBRM1

Contact



www.abclonal.com

Product Information

Source

Rabbit

Isotype

IgG

Purification

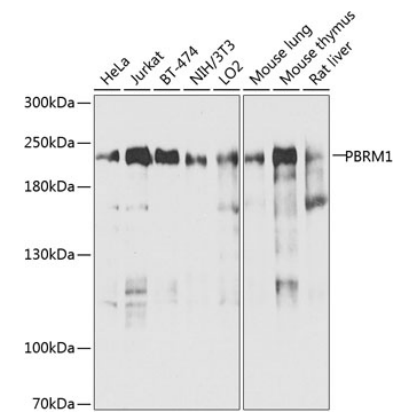
Affinity purification

Storage

Store at -20°C. Avoid freeze / thaw cycles.

Buffer: PBS with 0.02% sodium azide, 50% glycerol, pH7.3.

Validation Data



Western blot analysis of various lysates using PBRM1 Rabbit pAb (A9878) at 1:1000 dilution. Secondary antibody: HRP Goat Anti-Rabbit IgG (H+L) (A5014) at 1:10000 dilution. Lysates/proteins: 25µg per lane. Blocking buffer: 3% nonfat dry milk in TBST. Detection: ECL Enhanced Kit (RM00021). Exposure time: 30s.

Immunoprecipitation analysis of 300 µg extracts of Jurkat cells using 3 µg PBRM1 Rabbit pAb (A9878). Western blot was performed from the immunoprecipitate using PBRM1 Rabbit pAb (A9878) at a dilution of 1:500.

