

A9873

Leader in Biomolecular Solutions for Life Science



## RBM15B Rabbit pAb

Catalog No.: A9873

### Basic Information

**Observed MW**

97kDa/107kDa

**Calculated MW**

97kDa

**Category**

Polyclonal Antibody

**Applications**

WB, ELISA

**Cross-Reactivity**

Human, Mouse

### Background

Members of the SPEN (Split-end) family of proteins, including RBM15B, have repressor function in several signaling pathways and may bind to RNA through interaction with spliceosome components (Hiriart et al., 2005 [PubMed 16129689]).

### Recommended Dilutions

WB 1:500 - 1:2000

### Immunogen Information

**Gene ID**

29890

**Swiss Prot**

Q8NDT2

**Immunogen**

Recombinant fusion protein containing a sequence corresponding to amino acids 540-720 of human RBM15B (NP\_037418.3).

**Synonyms**

OTT3; HsOTT3; HUMAGCGB; RBM15B

### Contact



[www.abclonal.com](http://www.abclonal.com)

### Product Information

**Source**

Rabbit

**Isotype**

IgG

**Purification**

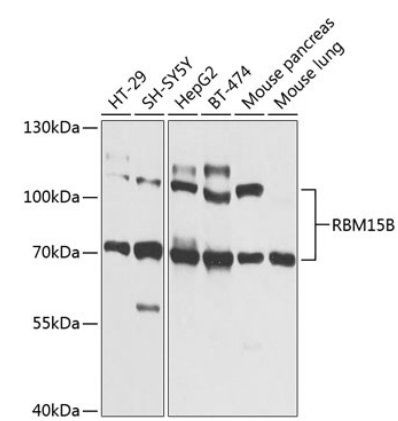
Affinity purification

**Storage**

Store at -20°C. Avoid freeze / thaw cycles.

Buffer: PBS with 0.02% sodium azide, 50% glycerol, pH 7.3.

Validation Data



Western blot analysis of extracts of various cell lines, using RBM15B Antibody (A9873) at 1:1000 dilution.  
Secondary antibody: HRP Goat Anti-Rabbit IgG (H+L) (A5014) at 1:10000 dilution.  
Lysates/proteins: 25µg per lane.  
Blocking buffer: 3% nonfat dry milk in TBST.  
Detection: ECL Basic Kit (RM00020).  
Exposure time: 1s.