

A9851

Leader in Biomolecular Solutions for Life Science



[KO Validated] WSTF Rabbit pAb

Catalog No.: A9851

KO Validated

1 Publications

Basic Information

Observed MW

190kDa

Calculated MW

171kDa

Category

Polyclonal Antibody

Applications

WB, IHC-P, ELISA

Cross-Reactivity

Human, Mouse, Rat

Background

This gene encodes a member of the bromodomain protein family. The bromodomain is a structural motif characteristic of proteins involved in chromatin-dependent regulation of transcription. This gene is deleted in Williams-Beuren syndrome, a developmental disorder caused by deletion of multiple genes at 7q11.23.

Recommended Dilutions

WB 1:500 - 1:2000

IHC-P 1:50 - 1:200

Immunogen Information

Gene ID

9031

Swiss Prot

Q9UIG0

Immunogen

Recombinant fusion protein containing a sequence corresponding to amino acids 1-260 of human WSTF (NP_115784.1).

Synonyms

WSTF; WBSCR9; WBSCR10; TF

Contact



www.abclonal.com

Product Information

Source

Rabbit

Isotype

IgG

Purification

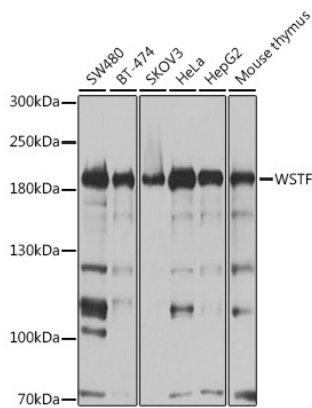
Affinity purification

Storage

Store at -20°C. Avoid freeze / thaw cycles.

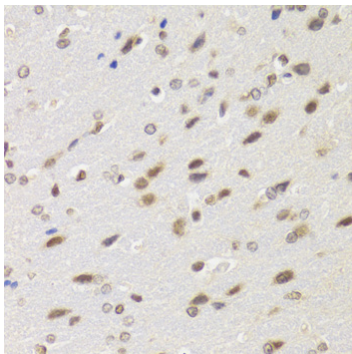
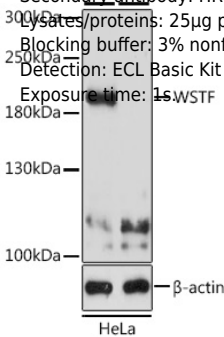
Buffer: PBS with 0.02% sodium azide, 50% glycerol, pH 7.3.

Validation Data

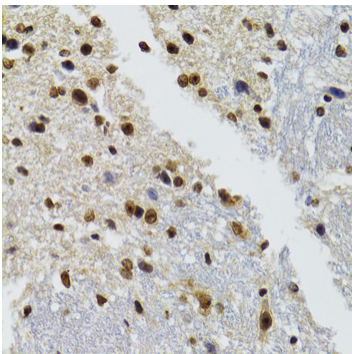


Western blot analysis of extracts of various cell lines, using WSTF antibody (A9851) at 1:1000 dilution.
Secondary antibody: HRP Goat Anti-Rabbit IgG (H+L) (AS014) at 1:10000 dilution.
Lysates/proteins: 25µg per lane.
Blocking buffer: 3% nonfat dry milk in TBST.
Detection: ECL Basic Kit (RM00020).
Exposure time: 5s.

Western blot analysis of extracts from normal (control) and WSTF knockout (KO) HeLa cells, using WSTF antibody (A9851) at 1:500 dilution.
Secondary antibody: HRP Goat Anti-Rabbit IgG (H+L) (AS014) at 1:10000 dilution.
Lysates/proteins: 25µg per lane.
Blocking buffer: 3% nonfat dry milk in TBST.
Detection: ECL Basic Kit (RM00020).
Exposure time: 1s.



Immunohistochemistry analysis of paraffin-embedded rat brain using WSTF antibody (A9851) at dilution of 1:100 (40x lens).Perform microwave antigen retrieval with 10 mM PBS buffer pH 7.2 before commencing with IHC staining protocol.



Immunohistochemistry analysis of paraffin-embedded mouse brain using WSTF antibody (A9851) at dilution of 1:100 (40x lens).Perform microwave antigen retrieval with 10 mM PBS buffer pH 7.2 before commencing with IHC staining protocol.