

## FBP2 Rabbit pAb

Catalog No.: A9850

### Basic Information

#### Observed MW

36kDa

#### Calculated MW

37kDa

#### Category

Primary antibody

#### Applications

ELISA, WB, IF/ICC

#### Cross-Reactivity

Mouse, Rat

### Background

This gene encodes a gluconeogenesis regulatory enzyme which catalyzes the hydrolysis of fructose 1,6-bisphosphate to fructose 6-phosphate and inorganic phosphate.

### Recommended Dilutions

WB	1:500 - 1:2000
IF/ICC	1:50 - 1:200

### Immunogen Information

Gene ID	Swiss Prot
8789	O00757

#### Immunogen

Recombinant fusion protein containing a sequence corresponding to amino acids 1-339 of human FBP2 (NP\_003828.2).

#### Synonyms

CORLK; FBP2

### Contact

 | [www.abclonal.com](http://www.abclonal.com)

### Product Information

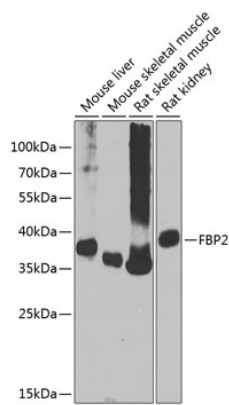
Source	Isotype	Purification
Rabbit	IgG	Affinity purification

#### Storage

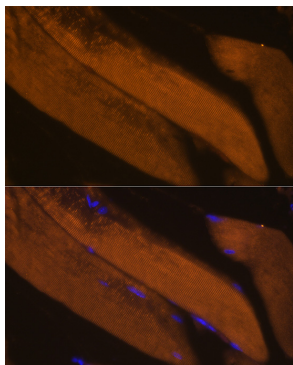
Store at -20°C. Avoid freeze / thaw cycles.

Buffer: PBS with 0.02% sodium azide, 50% glycerol, pH7.3.

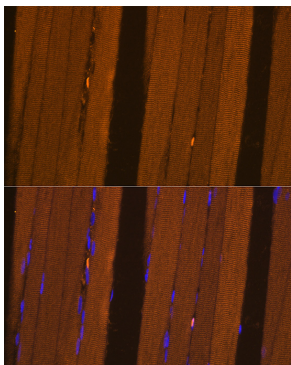
# Validation Data



Western blot analysis of extracts of various cell lines, using FBP2 antibody (A9850) at 1:1000 dilution.  
Secondary antibody: HRP Goat Anti-Rabbit IgG (H+L) (AS014) at 1:10000 dilution.  
Lysates/proteins: 25µg per lane.  
Blocking buffer: 3% nonfat dry milk in TBST.  
Detection: ECL Basic Kit (RM00020).  
Exposure time: 90s.



Immunofluorescence analysis of Mouse skeletal muscle using FBP2 antibody (A9850) at dilution of 1:100. Blue: DAPI for nuclear staining.



Immunofluorescence analysis of Rat skeletal muscle using FBP2 antibody (A9850) at dilution of 1:100. Blue: DAPI for nuclear staining.