

A9843

Leader in Biomolecular Solutions for Life Science



## GLUT2/SLC2A2 Rabbit pAb

Catalog No.: A9843

7 Publications

### Basic Information

#### Observed MW

#### Calculated MW

57kDa

#### Category

Polyclonal Antibody

#### Applications

WB, IHC-P, IF/ICC, ELISA

#### Cross-Reactivity

Human, Mouse, Rat

### Background

This gene encodes an integral plasma membrane glycoprotein of the liver, islet beta cells, intestine, and kidney epithelium. The encoded protein mediates facilitated bidirectional glucose transport. Because of its low affinity for glucose, it has been suggested as a glucose sensor. Mutations in this gene are associated with susceptibility to diseases, including Fanconi-Bickel syndrome and noninsulin-dependent diabetes mellitus (NIDDM). Alternative splicing results in multiple transcript variants of this gene.

### Recommended Dilutions

WB	1:100 - 1:500
IF/ICC	1:50 - 1:200
IHC-P	1:50 - 1:200

### Immunogen Information

#### Gene ID

6514

#### Swiss Prot

P11168

#### Immunogen

A synthetic peptide corresponding to a sequence within amino acids 1-100 of human GLUT2/GLUT2/SLC2A2 (NP\_000331.1).

#### Synonyms

GLUT2; GLUT2/SLC2A2

### Contact



[www.abclonal.com](http://www.abclonal.com)

### Product Information

#### Source

Rabbit

#### Isotype

IgG

#### Purification

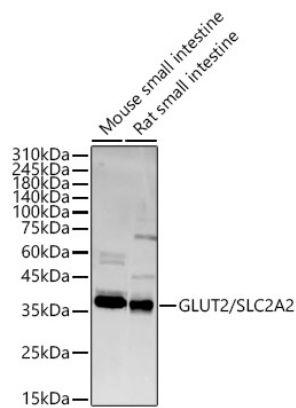
Affinity purification

#### Storage

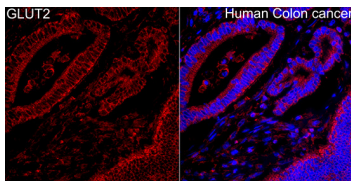
Store at -20°C. Avoid freeze / thaw cycles.

Buffer: PBS with 0.02% sodium azide, 50% glycerol, pH 7.3.

## Validation Data



Western blot analysis of various lysates, using GLUT2/SLC2A2 Rabbit pAb (A9843) at 1:500 dilution.  
Secondary antibody: HRP Goat Anti-Rabbit IgG (H+L) (AS014) at 1:10000 dilution.  
Lysates/proteins: 25µg per lane.  
Blocking buffer: 3% nonfat dry milk in TBST.  
Detection: ECL Basic Kit (RM00020).  
Exposure time: 90s.



Immunofluorescence analysis of paraffin-embedded Human colon cancer using GLUT2/SLC2A2 Rabbit pAb(A9843) at a dilution of 1:150 (40x lens). Secondary antibody: Cy3 Goat Anti-Rabbit IgG (H+L)(AS007) at 1:500 dilution. Blue: DAPI for nuclear staining. Perform high pressure antigen retrieval with 0.01 M citrate buffer (pH 6.0) prior to IF staining.