

A9840

Leader in Biomolecular Solutions for Life Science



RNASEL Rabbit pAb

Catalog No.: A9840

1 Publications

Basic Information

Observed MW

80kDa

Calculated MW

84kDa

Category

Polyclonal Antibody

Applications

WB, ELISA

Cross-Reactivity

Human, Mouse, Rat

Background

This gene encodes a component of the interferon-regulated 2-5A system that functions in the antiviral and antiproliferative roles of interferons. The protein is involved in innate immunity and is active against multiple RNA viruses, including the influenza and SARS-CoV-2 viruses. Mutations in this gene have been associated with predisposition to prostate cancer and this gene is a candidate for the hereditary prostate cancer 1 (HPC1) allele.

Recommended Dilutions

WB 1:100 - 1:500

Immunogen Information

Gene ID

6041

Swiss Prot

Q05823

Immunogen

Recombinant fusion protein containing a sequence corresponding to amino acids 472-741 of human RNASEL (NP_066956.1).

Synonyms

RNS4; PRCA1; RNASEL

Contact



www.abclonal.com

Product Information

Source

Rabbit

Isotype

IgG

Purification

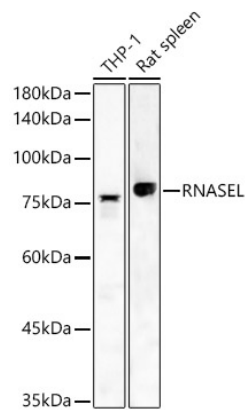
Affinity purification

Storage

Store at -20°C. Avoid freeze / thaw cycles.

Buffer: PBS with 0.02% sodium azide, 50% glycerol, pH 7.3.

Validation Data



Western blot analysis of various lysates, using RNASEL antibody (A9840) at 1:400 dilution.
Secondary antibody: HRP Goat Anti-Rabbit IgG (H+L) (AS014) at 1:10000 dilution.
Lysates/proteins: 25µg per lane.
Blocking buffer: 3% nonfat dry milk in TBST.
Detection: ECL Basic Kit (RM00020).
Exposure time: 90s.

Western blot analysis of Mouse spleen, using RNASEL antibody (A9840) at 1:400 dilution.
Secondary antibody: HRP Goat Anti-Rabbit IgG (H+L) (AS014) at 1:10000 dilution.
Lysates/proteins: 25µg per lane.
Blocking buffer: 3% nonfat dry milk in TBST.
Detection: ECL Basic Kit (RM00020).
Exposure time: 10s.

