

A9833

Leader in Biomolecular Solutions for Life Science



## OPA1 Rabbit pAb

Catalog No.: A9833

37 Publications

### Basic Information

#### Observed MW

80-100kDa

#### Calculated MW

112kDa

#### Category

Polyclonal Antibody

#### Applications

WB, IF/ICC, ELISA

#### Cross-Reactivity

Human, Mouse, Rat

### Background

The protein encoded by this gene is a nuclear-encoded mitochondrial protein with similarity to dynamin-related GTPases. The encoded protein localizes to the inner mitochondrial membrane and helps regulate mitochondrial stability and energy output. This protein also sequesters cytochrome c. Mutations in this gene have been associated with optic atrophy type 1, which is a dominantly inherited optic neuropathy resulting in progressive loss of visual acuity, leading in many cases to legal blindness.

### Recommended Dilutions

WB	1:2000 - 1:8000
IF/ICC	1:50 - 1:200

### Immunogen Information

#### Gene ID

4976

#### Swiss Prot

O60313

#### Immunogen

Recombinant fusion protein containing a sequence corresponding to amino acids 200-600 of human OPA1 (NP\_056375.2).

#### Synonyms

NPG; NTG; MGM1; BERHS; largeG; MTDPS14; OPA1

### Contact



[www.abclonal.com](http://www.abclonal.com)

### Product Information

#### Source

Rabbit

#### Isotype

IgG

#### Purification

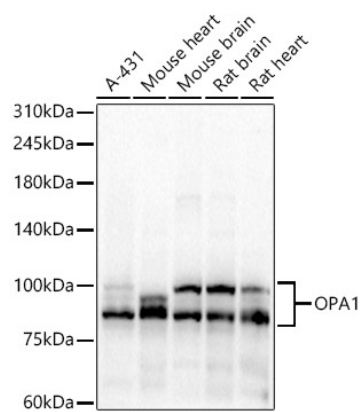
Affinity purification

#### Storage

Store at -20°C. Avoid freeze / thaw cycles.

Buffer: PBS with 0.05% proclin300, 50% glycerol, pH7.3.

## Validation Data



Western blot analysis of various lysates, using OPA1 antibody (A9833) at 1:7000 dilution.  
Secondary antibody: HRP Goat Anti-Rabbit IgG (H+L) (AS014) at 1:10000 dilution.  
Lysates/proteins: 25µg per lane.  
Blocking buffer: 3% nonfat dry milk in TBST.  
Detection: ECL Basic Kit (RM00020).  
Exposure time: 30s.