

A9831

Leader in Biomolecular Solutions for Life Science



## NDUFA6 Rabbit pAb

Catalog No.: A9831

### Basic Information

**Observed MW**

13kDa

**Calculated MW**

15kDa

**Category**

Polyclonal Antibody

**Applications**

WB, ELISA

**Cross-Reactivity**

Human, Mouse, Rat

### Background

This gene encodes a member of the LYR family of proteins that contain a highly conserved tripeptide (LYR) motif near the N-terminus. The encoded protein is an accessory subunit of NADH: ubiquinone oxidoreductase (Complex I), which is the largest enzyme of the mitochondrial membrane respiratory chain. Complex I functions in electron transfer from NADH to the respiratory chain.

### Recommended Dilutions

WB 1:500 - 1:2000

### Immunogen Information

**Gene ID**

4700

**Swiss Prot**

P56556

**Immunogen**

Recombinant fusion protein containing a sequence corresponding to amino acids 35-154 of human NDUFA6 (NP\_002481.2).

**Synonyms**

B14; LYRM6; CI-B14; MC1DN33; NADHB14; NDUFA6

### Contact



[www.abclonal.com](http://www.abclonal.com)

### Product Information

**Source**

Rabbit

**Isotype**

IgG

**Purification**

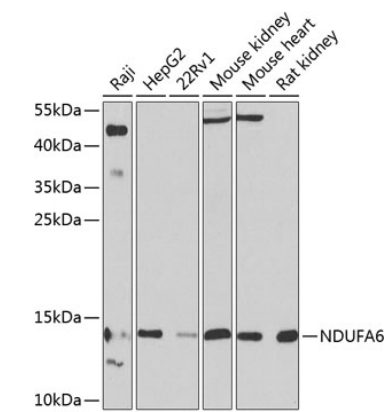
Affinity purification

**Storage**

Store at -20°C. Avoid freeze / thaw cycles.

Buffer: PBS with 0.02% sodium azide, 50% glycerol, pH7.3.

Validation Data



Western blot analysis of extracts of various cell lines, using NDUFA6 antibody (A9831) at 1:1000 dilution.  
Secondary antibody: HRP Goat Anti-Rabbit IgG (H+L) (A5014) at 1:10000 dilution.  
Lysates/proteins: 25µg per lane.  
Blocking buffer: 3% nonfat dry milk in TBST.  
Detection: ECL Basic Kit (RM00020).  
Exposure time: 90s.