

A9826

Leader in Biomolecular Solutions for Life Science



## KCNJ10 Rabbit pAb

Catalog No.: A9826

### Basic Information

**Observed MW**

42kDa

**Calculated MW**

43kDa

**Category**

Polyclonal Antibody

**Applications**

WB, ELISA

**Cross-Reactivity**

Human, Mouse, Rat

### Background

This gene encodes a member of the inward rectifier-type potassium channel family, characterized by having a greater tendency to allow potassium to flow into, rather than out of, a cell. The encoded protein may form a heterodimer with another potassium channel protein and may be responsible for the potassium buffering action of glial cells in the brain. Mutations in this gene have been associated with seizure susceptibility of common idiopathic generalized epilepsy syndromes.

### Recommended Dilutions

WB 1:500 - 1:2000

### Immunogen Information

**Gene ID**

3766

**Swiss Prot**

P78508

**Immunogen**

A synthetic peptide corresponding to a sequence within amino acids 50-150 of human KCNJ10 (NP\_002232.2).

**Synonyms**

KIR1.2; KIR4.1; SESAME; BIRK-10; KCNJ13-PEN; KCNJ10

### Contact



[www.abclonal.com](http://www.abclonal.com)

### Product Information

**Source**

Rabbit

**Isotype**

IgG

**Purification**

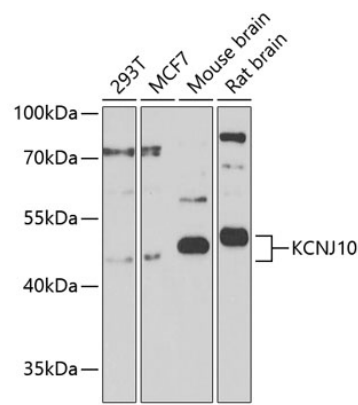
Affinity purification

**Storage**

Store at -20°C. Avoid freeze / thaw cycles.

Buffer: PBS with 0.02% sodium azide, 50% glycerol, pH 7.3.

Validation Data



Western blot analysis of extracts of various cell lines, using KCNJ10 Antibody (A9826) at 1:1000 dilution.  
Secondary antibody: HRP Goat Anti-Rabbit IgG (H+L) (A5014) at 1:10000 dilution.  
Lysates/proteins: 25µg per lane.  
Blocking buffer: 3% nonfat dry milk in TBST.  
Detection: ECL Basic Kit (RM00020).  
Exposure time: 90s.