

A9810

Leader in Biomolecular Solutions for Life Science



## NY-ESO-1 Rabbit pAb

Catalog No.: A9810

### Basic Information

**Observed MW**

20kDa

**Calculated MW**

18kDa

**Category**

Mouse Monoclonal Antibody

**Applications**

WB, IHC-P, ELISA

**Cross-Reactivity**

Human

### Background

The protein encoded by this gene is an antigen that is overexpressed in many cancers but that is also expressed in normal testis. This gene is found in a duplicated region of the X-chromosome and therefore has a neighboring gene of identical sequence.

### Recommended Dilutions

WB	1:500 - 1:1000
IHC-P	1:50 - 1:200

### Immunogen Information

**Gene ID**

1485

**Swiss Prot**

P78358

**Immunogen**

A synthetic peptide corresponding to a sequence within amino acids 1-100 of human NY-ESO-1 (NP\_001318.1).

**Synonyms**

CTAG; ESO1; CT6.1; CTAG1; LAGE-2; LAGE2B; NY-ESO-1

### Contact



[www.abclonal.com](http://www.abclonal.com)

### Product Information

**Source**

Rabbit

**Isotype**

IgG

**Purification**

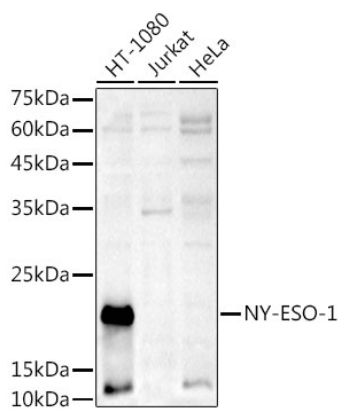
Affinity purification

**Storage**

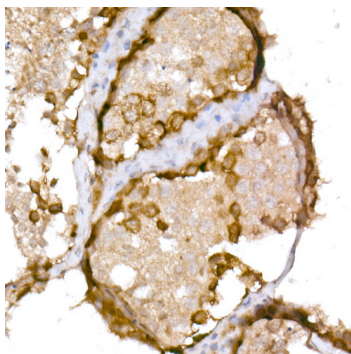
Store at -20°C. Avoid freeze / thaw cycles.

Buffer: PBS with 0.05% proclin300, 50% glycerol, pH7.3.

## Validation Data



Western blot analysis of extracts of various cell lines, using NY-ESO-1 antibody (A9810) at 1:1000 dilution. Secondary antibody: HRP Goat Anti-Rabbit IgG (H+L) (A5014) at 1:10000 dilution. Lysates/proteins: 25µg per lane. Blocking buffer: 3% nonfat dry milk in TBST. Detection: ECL Basic Kit (RM00020). Exposure time: 180s.



Immunohistochemistry analysis of paraffin-embedded human testis using NY-ESO-1 Rabbit pAb (A9810) at dilution of 1:100 (40x lens). Perform high pressure antigen retrieval with 10 mM Tris/EDTA buffer pH 8.0 before commencing with IHC staining protocol.