

# COL4A5 Rabbit pAb

Catalog No.: A9809

## Basic Information

### Observed MW

161kDa

### Calculated MW

161kDa

### Category

Primary antibody

### Applications

ELISA, WB, IF/ICC

### Cross-Reactivity

Human

## Background

This gene encodes one of the six subunits of type IV collagen, the major structural component of basement membranes. Mutations in this gene are associated with X-linked Alport syndrome, also known as hereditary nephritis. Like the other members of the type IV collagen gene family, this gene is organized in a head-to-head conformation with another type IV collagen gene so that each gene pair shares a common promoter. Alternatively spliced transcript variants have been identified for this gene.

## Recommended Dilutions

<b>WB</b>	1:500 - 1:2000
<b>IF/ICC</b>	1:500 - 1:1000

## Immunogen Information

### Gene ID

1287

### Swiss Prot

P29400

### Immunogen

Recombinant fusion protein containing a sequence corresponding to amino acids 1462-1691 of human COL4A5 (NP\_203699.1).

### Synonyms

ATS; ASLN; ATS1; CA54; COL4A5

## Contact

 | [www.abclonal.com](http://www.abclonal.com)

## Product Information

### Source

Rabbit

### Isotype

IgG

### Purification

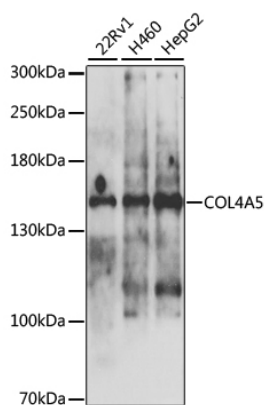
Affinity purification

### Storage

Store at -20°C. Avoid freeze / thaw cycles.

Buffer: PBS with 0.02% sodium azide, 50% glycerol, pH7.3.

## Validation Data



Western blot analysis of extracts of various cell lines, using COL4A5 antibody (A9809) at 1:1000 dilution.

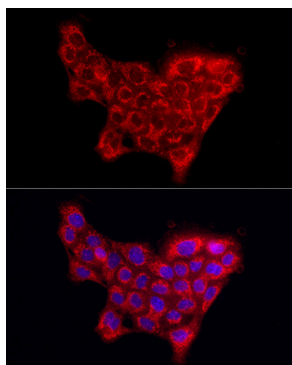
Secondary antibody: HRP Goat Anti-Rabbit IgG (H+L) (A5014) at 1:10000 dilution.

Lysates/proteins: 25µg per lane.

Blocking buffer: 3% nonfat dry milk in TBST.

Detection: ECL Basic Kit (RM00020).

Exposure time: 5s.



Immunofluorescence analysis of A-431 cells using COL4A5 Rabbit pAb (A9809) at dilution of 1:1000 (40x lens). Blue: DAPI for nuclear staining.