

A9808

Leader in Biomolecular Solutions for Life Science



# CHRNA2 Rabbit pAb

Catalog No.: A9808

## Basic Information

### Observed MW

50-52kDa

### Calculated MW

57kDa

### Category

Mouse Monoclonal Antibody

### Applications

WB,IF/ICC,ELISA

### Cross-Reactivity

Human,Mouse,Rat

## Background

Neuronal acetylcholine receptors are homo- or heteropentameric complexes composed of homologous alpha and beta subunits. They belong to a superfamily of ligand-gated ion channels which allow the flow of sodium and potassium across the plasma membrane in response to ligands such as acetylcholine and nicotine. This gene encodes one of several beta subunits. Mutations in this gene are associated with autosomal dominant nocturnal frontal lobe epilepsy.

## Recommended Dilutions

WB	1:500 - 1:2000
IF/ICC	1:50 - 1:200

## Immunogen Information

### Gene ID

1141

### Swiss Prot

P17787

### Immunogen

Recombinant fusion protein containing a sequence corresponding to amino acids 340-430 of human CHRNA2 (NP\_000739.1).

### Synonyms

EFNL3; nAChRB2; CHRNA2

## Contact



[www.abclonal.com](http://www.abclonal.com)

## Product Information

### Source

Rabbit

### Isotype

IgG

### Purification

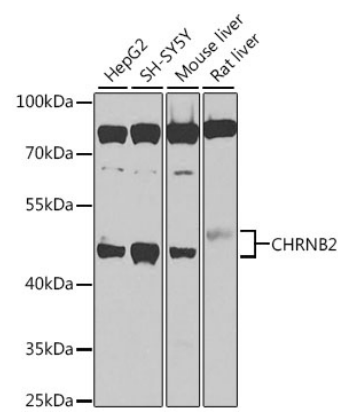
Affinity purification

### Storage

Store at -20°C. Avoid freeze / thaw cycles.

Buffer: PBS with 0.02% sodium azide,50% glycerol,pH7.3.

Validation Data



Western blot analysis of extracts of various cell lines, using CHRN2 antibody (A9808) at 1:1000 dilution. Secondary antibody: HRP Goat Anti-Rabbit IgG (H+L) (A5014) at 1:10000 dilution. Lysates/proteins: 25µg per lane. Blocking buffer: 3% nonfat dry milk in TBST. Detection: ECL Basic Kit (RM00020). Exposure time: 90s.