

A9800

Leader in Biomolecular Solutions for Life Science



## VSX1 Rabbit pAb

Catalog No.: A9800

### Basic Information

**Observed MW**

40kDa

**Calculated MW**

38kDa

**Category**

Polyclonal Antibody

**Applications**

WB, ELISA

**Cross-Reactivity**

Human

### Background

The protein encoded by this gene contains a paired-like homeodomain and binds to the core of the locus control region of the red/green visual pigment gene cluster. The encoded protein may regulate expression of the cone opsin genes early in development. Mutations in this gene can cause posterior polymorphous corneal dystrophy and keratoconus. Alternatively spliced transcript variants encoding different isoforms have been described.

### Recommended Dilutions

WB 1:500 - 1:2000

### Immunogen Information

**Gene ID**

30813

**Swiss Prot**

Q9NZR4

**Immunogen**

Recombinant fusion protein containing a sequence corresponding to amino acids 1-170 of human VSX1 (NP\_055403.2).

**Synonyms**

PPD; KTCN; PPCD; RINX; KTCN1; PPCD1; CAASDS; VSX1

### Contact



[www.abclonal.com](http://www.abclonal.com)

### Product Information

**Source**

Rabbit

**Isotype**

IgG

**Purification**

Affinity purification

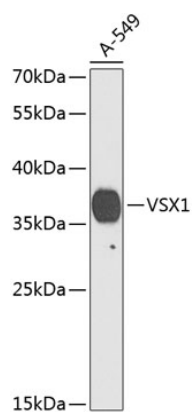
**Storage**

Store at -20°C. Avoid freeze / thaw cycles.

Buffer: PBS with 0.02% sodium azide, 50% glycerol, pH 7.3.

## Validation Data

---



Western blot analysis of lysates from A-549 cells, using VSX1 Rabbit pAb (A9800) at 1:1000 dilution.  
Secondary antibody: HRP Goat Anti-Rabbit IgG (H+L) (A5014) at 1:10000 dilution.  
Lysates/proteins: 25µg per lane.  
Blocking buffer: 3% nonfat dry milk in TBST.  
Detection: ECL Basic Kit (RM00020).  
Exposure time: 90s.